

Rittal – The System.

Faster – better – everywhere.



AX 2830.320

Base/plinth elements, lateral

State: 2/24/2026 (Source: [rittal.com/us-en](https://www.rittal.com/us-en))

ENCLOSURES

POWER DISTRIBUTION

CLIMATE CONTROL

IT INFRASTRUCTURE

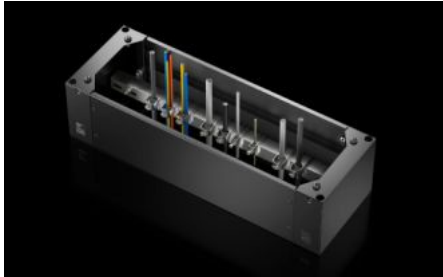
SOFTWARE & SERVICES

FRIEDHELM LOH GROUP



AX 2830.320 - Base/plinth elements, lateral for AX

Base/plinth element for attaching in the depth and for stabilizing the base/plinth.



Features

Model No.	AX 2830.320
Version	new version/design
Material	Base/plinth components: Carbon steel Cover caps: Plastic
Color	RAL 9005
Supply includes	2 base/plinth components 2 cover caps Assembly components
Note	The components of the first generation base/plinth system cannot be combined with the components of the second generation base/plinth system
Dimensions	Height: 200 mm Height: 7.87 "
Suitable for	Enclosure type: AX Depth: = 300 mm Enclosure type: AX Depth: = 11.8 "
Packaging unit	2 pc(s).
Net weight	3.208 kg
Gross weight	3.209 kg
Customs tariff number	94039910

Features

ETIM 9	EC000721
ETIM 8	EC000721
ECLASS 8.0	27182003
Product description	AX base/plinth element, side, height: 200 mm, for depth: 300 mm

Approvals

Approvals	UL + C-UL - FTTA
-----------	------------------