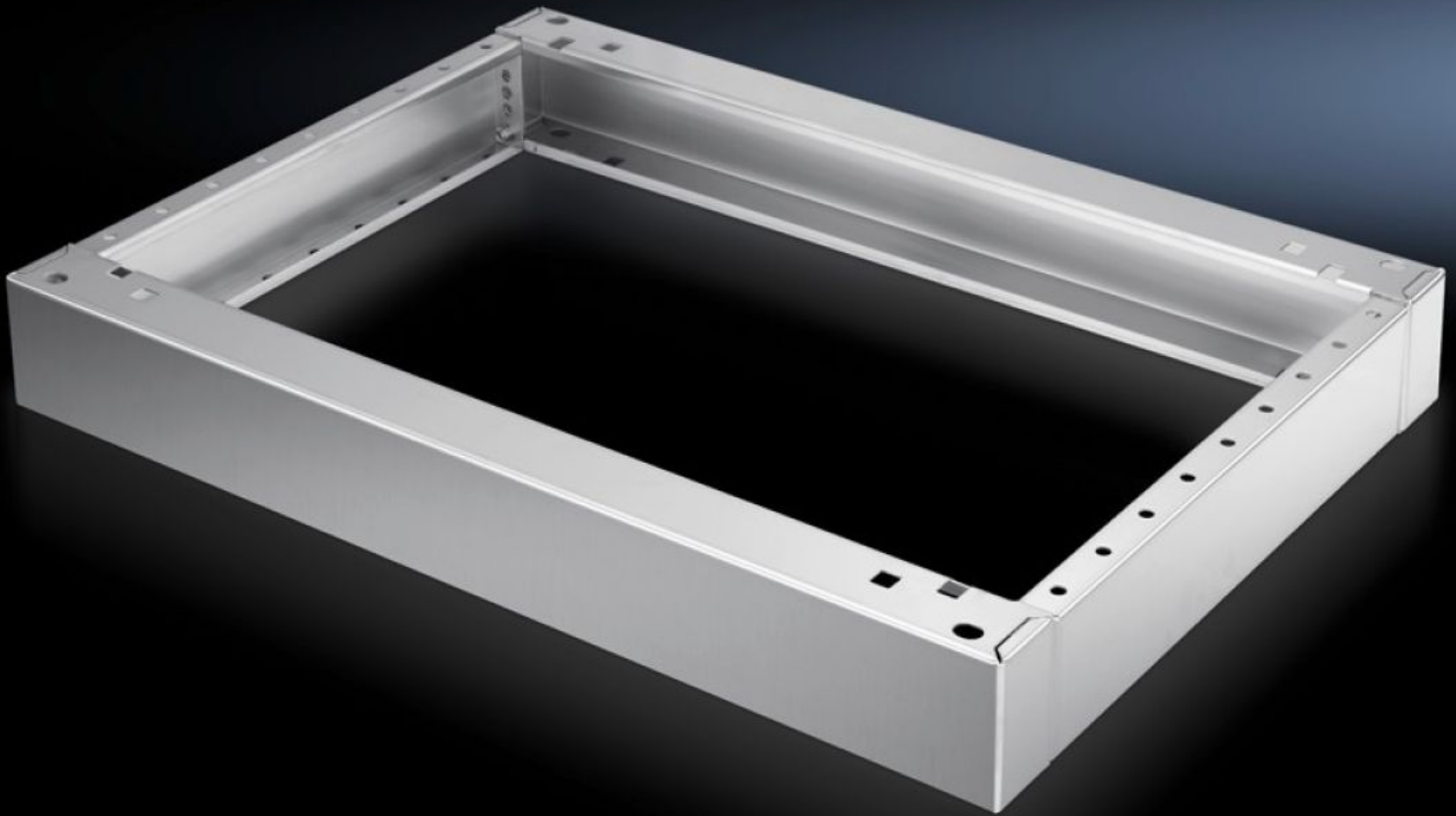


# Rittal – The System.

Faster – better – everywhere.



## SO 2869.000

## Base/Plinth, Complete

State: 4/25/2026 (Source: [rittal.com/us-en](http://rittal.com/us-en))

ENCLOSURES

POWER DISTRIBUTION

CLIMATE CONTROL

IT INFRASTRUCTURE

SOFTWARE & SERVICES

FRIEDHELM LOH GROUP



# SO 2869.000 - Base/Plinth, Complete Stainless steel, for one-piece consoles

Where necessary, two base/plinths can be installed above one another.

## Features

Model No.	SO 2869.000
Product description	Where necessary, two base/plinths can be installed one above the other.
Material	Stainless steel 1.4301 (AISI 304)
Surface finish	Brushed
Supply includes	2 trim panels front/rear 2 trim panels, side Assembly components for mounting on the enclosure
Dimensions	Height: 100 mm Height: 3.94 "
Suitable for	Enclosure type: One-piece console, stainless steel Width: = 800 mm Depth: = 400 mm Enclosure type: One-piece console, stainless steel Width: = 31.5 " Depth: = 15.7 "
Packaging unit	1 pc(s).
Net weight	7.317 kg
Gross weight	7.702 kg
Customs tariff number	94039910
ETIM 9	EC000721
ETIM 8	EC000721
ECLASS 8.0	27182003
Product description	TP Base/plinth, complete, for one-piece console, WHD: 800x100x400, Stainless steel 1.4301