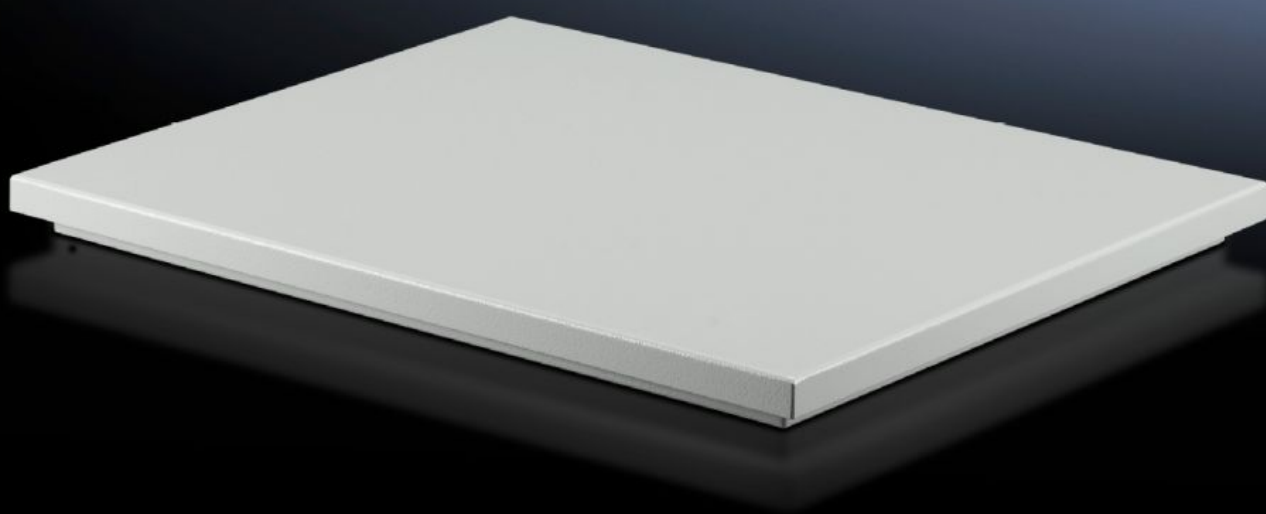


Rittal – The System.

Faster – better – everywhere.



SK 3149.820

TopTherm roof-mounted fans

State: 12/20/2025 (Source: rittal.com/us-en)

ENCLOSURES

POWER DISTRIBUTION

CLIMATE CONTROL

IT INFRASTRUCTURE

SOFTWARE & SERVICES

FRIEDHELM LOH GROUP



SK 3149.820 - TopTherm roof-mounted fans for TS 8

The roof-mounted fans for TS precisely match the cut-outs on the TopTherm roof-mounted cooling units. Can also be mounted on any roof surface of sufficient size. The mounting cut-outs are not compatible with the successor articles of the VX IT product family. A 5050.701 adapter frame is required if the roof plate is to continue to be used in the VX IT.

Features

Model No.	SK 3149.820
Product description	The active roof-mounted fans fit precisely onto the cut-outs for the small and medium TopTherm roof-mounted cooling unit output category.
Product modification	Mounting cutouts are not compatible. Adapter frame 5050.701 is required when using the roof panel.
Material	Carbon steel, spray finished
Color	RAL 7035
Supply includes	Unit ready for connection with built-in radial fan Sealing and assembly components
Rated operating voltage	230 V, 1~, 50 Hz/60 Hz
Rated power Pel	At 50 Hz: 170 W At 60 Hz: 225 W
Rated current max.	At 50 Hz: 0.75 A At 60 Hz: 1.1 A
Dimensions	Width: 550 mm Height: 125 mm Depth: 370 mm Width: 21.7 " Height: 4.92 " Depth: 14.6 "
Mounting cut-out	Width of opening: 475 mm Depth of opening: 260 mm Width of opening: 18.7 " Depth of opening: 10.2 "

Features

Protection category IP to IEC 60529	IP 43
Operating temperature range	-10 °C...55 °C 14 °F...131 °F
Noise pressure level	At 50 Hz: 69 dB(A) At 60 Hz: 70 dB(A)
Packaging unit	1 pc(s).
Net weight	9.87
Gross weight	10.389
Customs tariff number	84145915
EAN	4028177387157
ECLASS 8.0	27180716

Approvals

Explanations	Declaration of conformity
--------------	---------------------------