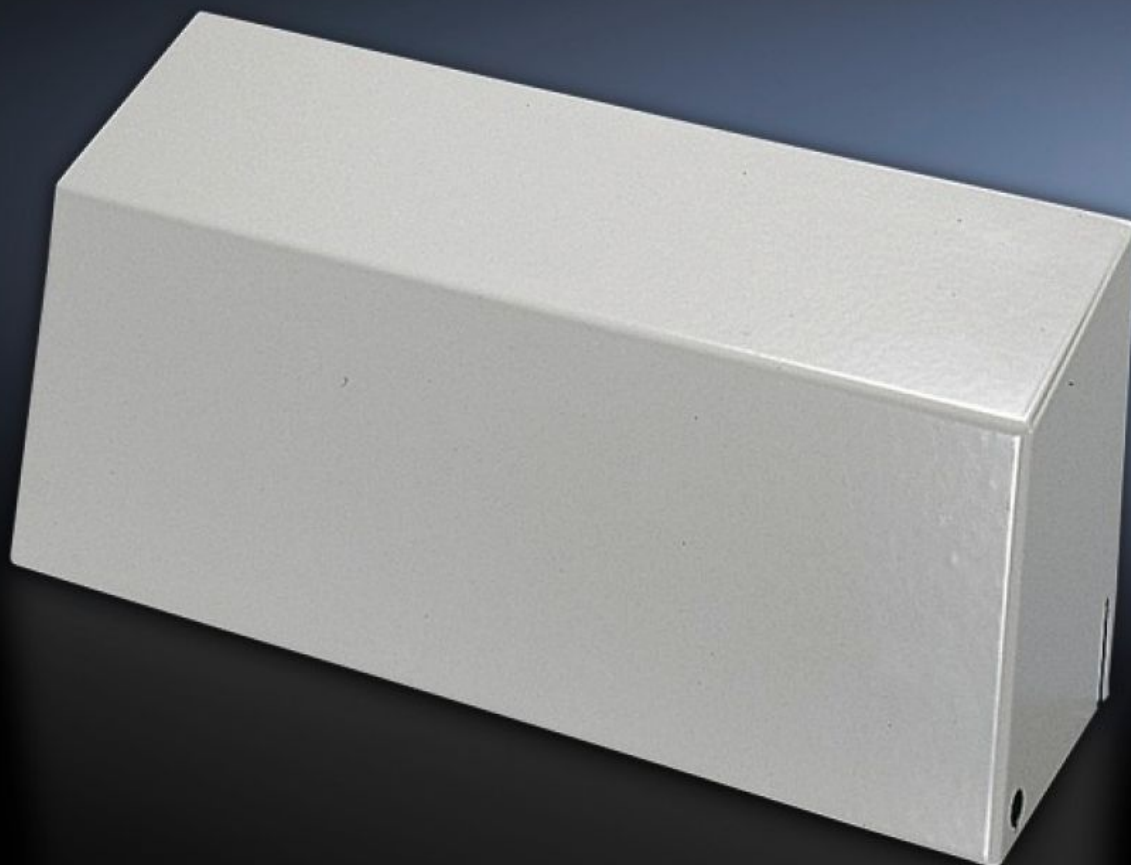


# Rittal – The System.

Faster – better – everywhere.



## SK 3213.310

## Air diverter

State: 9/10/2025 (Source: [rittal.com/us-en](https://www.rittal.com/us-en))

ENCLOSURES

POWER DISTRIBUTION

CLIMATE CONTROL

IT INFRASTRUCTURE

SOFTWARE & SERVICES

FRIEDHELM LOH GROUP



# SK 3213.310 - Air diverter

Targeted cold air routing to avoid heat pockets. Especially well-suited for densely-packed electrical components in the enclosure.

## Features

Model No.	SK 3213.310
Product description	For use with wall-mounted cooling units, for targeted air routing of the cold air in a downward direction. Especially well-suited for densely-packed electrical components in the lower section of the enclosure.
Benefits	Air conduction of the cold air downwards
Material	Carbon steel
Color	RAL 7035
Suitable for	Wall-Mounted Cooling Unit TopTherm Blue e
Suitable for Model No.	3304.xxx 3305.xxx
Packaging unit	1 pc(s).
Net weight	1.4
Gross weight	1.46
Customs tariff number	73269098
EAN	4028177380721
ETIM 9	EC011217
ETIM 8	EC011217
ECLASS 8.0	22410601