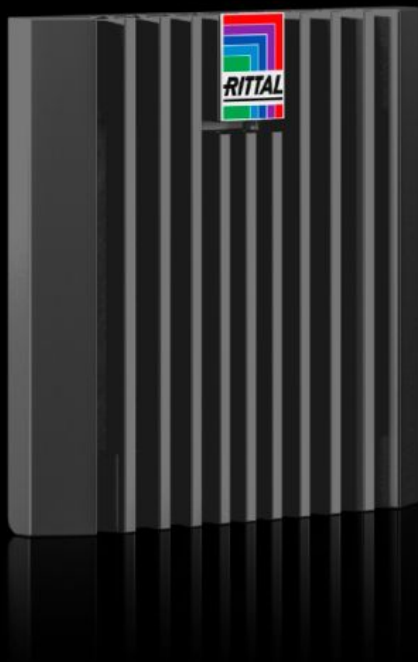


Rittal – The System.

Faster – better – everywhere.



SK 3237.308 Blue e+ outlet filter

State: 1/12/2026 (Source: [rittal.com/us-en](https://www.rittal.com/us-en))

ENCLOSURES

POWER DISTRIBUTION

CLIMATE CONTROL

IT INFRASTRUCTURE

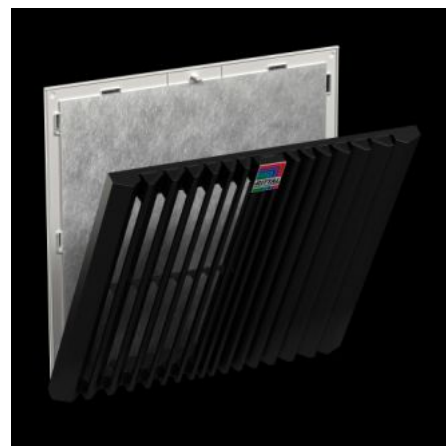
SOFTWARE & SERVICES

FRIEDHELM LOH GROUP



SK 3237.308 - Blue e+ outlet filter

The outlet filter is used in conjunction with the associated filter fan to dissipate lost heat out of the enclosures, to ventilate the enclosure and to protect temperature-sensitive components. This is done via the direct supply of ambient air that must be below the permissible temperature inside the enclosure.



Features

Model No.	SK 3237.308
Version	wall-mounted
Benefits	Easy filter change thanks to a new opening mechanism on the louvre grille Faster assembly on the enclosure due to optimized snap hooks Tool-free mounting
Material	Plastic
Color	RAL 9005
Supply includes	Outlet Filters Chopped fiber filter mat
Mounting cut-out	Width of opening: 92 mm Cut-out height: 92 mm Width of opening: 3.62 " Cut-out height: 3.62 "
Suitable for Model No.	SK 3237.7xx

Features

Dimensions	Width: 116.5 mm Height: 116.5 mm Depth: 33.2 mm Width: 4.59 " Height: 4.59 " Depth: 1.31 "
Protection category NEMA	Type 12 with fleece filter Type 3, 3R with fleece filter and hose-proof hood
Protection category IP to IEC 60529	IP 54 with fleece filter IP 56 with fleece filter and hose-proof hood
Packaging unit	1 pc(s).
Net weight	0.145
Gross weight	0.148
Customs tariff number	39269097
EAN	4028177998421
ETIM 9	EC002513
ETIM 8	EC002513
ECLASS 8.0	27180706

Approvals

Approvals	UL + C-UL - FTTA UR + C-UR (recognized)
-----------	--