

# Rittal – The System.

Faster – better – everywhere.



## SK 3237.710 Blue e+ filter fan

State: 8/25/2025 (Source: [rittal.com/us-en](https://www.rittal.com/us-en))

ENCLOSURES

POWER DISTRIBUTION

CLIMATE CONTROL

IT INFRASTRUCTURE

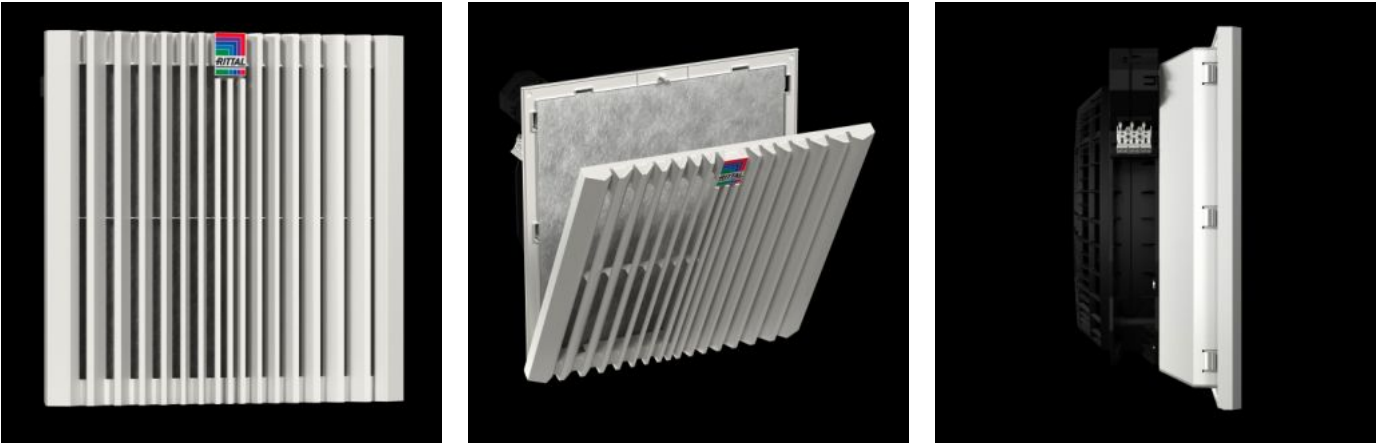
SOFTWARE & SERVICES

FRIEDHELM LOH GROUP



# SK 3237.710 - Blue e+ filter fan

Complete fan unit for tool-free mounting on surfaces. Air throughput from 11 - 682.75 cfm, protection category IP 54 as standard.



## Features

|                     |  |
|---------------------|--|
| Model No.           | SK 3237.710  |
| Version             | wall-mounted   |
| Product description | Filter fans with diagonal fan technology are more pressure-resistant and produce more constant air performance. The diagonal outflow direction ensures a more uniform heat dissipation from the enclosure.   |
| Benefits            | Easy filter change thanks to a new opening mechanism on the louvre grille<br>Faster assembly on the enclosure due to optimized snap hooks<br>Diagonal fan technology ensures more uniform and consistent ventilation of the control cabinet through higher pressure stability.<br>Tool-free mounting |
| Material            | Plastic  |
| Color               | RAL 7035   |
| Supply includes     | Complete unit ready to install, including chopped fiber filter mat   |
| Fan                 | Axial, shaded pole motor   |

# Features

|   |  |
|---|--|
| Unimpeded air flow (with chopped fiber filter)                          | At 50 Hz: 20 m³/h<br>At 60 Hz: 25 m³/h<br>At 50 Hz: 11.8 cfm<br>At 60 Hz: 14.7 cfm   |
| Airflow with corresponding outlet filter including chopped fiber filter | At 50 Hz: 15 m³/h<br>At 60 Hz: 18 m³/h<br>At 50 Hz: 8.83 cfm<br>At 60 Hz: 10.59 cfm  |
| Rated operating voltage   | 115 V, 1~, 50 Hz/60 Hz   |
| Rated power Pel   | At 50 Hz: 12 W<br>At 60 Hz: 10 W   |
| Rated current max.  | At 50 Hz: 0.14 A<br>At 60 Hz: 0.13 A   |
| Dimensions  | Width: 116.5 mm<br>Height: 116.5 mm<br>Depth: 64.5 mm<br>Width: 4.59 "<br>Height: 4.59 "<br>Depth: 2.54 "  |
| Installation depth  | 46 mm<br>1.81 "  |
| Mounting cut-out  | Width of opening: 92 mm<br>Cut-out height: 92 mm<br>Width of opening: 3.62 "<br>Cut-out height: 3.62 "   |
| Protection category IP to IEC 60529                                     | IP 54 with fleece filter<br>IP 56 with fleece filter and hose-proof hood   |
| Protection category NEMA  | Type 12 with fleece filter<br>Type 3, 3R with fleece filter and hose-proof hood  |
| Pre-fuse  | Miniature circuit-breaker/fuse: 2 A  |
| Note  | For the 3237.XXX filter fan, the electrical connection is made via 2 individual wires (length approx. 300 mm) on the unit, for all other filter fans, it's made via a spring-loaded terminal |
| Operating temperature range   | -15 °C...55 °C<br>5 °F...131 °F  |

# Features

|                           |  |
|---------------------------|--|
| Storage temperature range | -30 °C...70 °C<br>-22 °F...158 °F        |
| Noise pressure level      | At 50 Hz: 42 dB(A)<br>At 60 Hz: 47 dB(A) |
| Packaging unit            | 1 pc(s).                                 |
| Net weight                | 0.464                                    |
| Gross weight              | 0.466                                    |
| Customs tariff number     | 84145915                                 |
| EAN                       | 4028177998292                            |
| ETIM 9                    | EC000320                                 |
| ETIM 8                    | EC000320                                 |
| ECLASS 8.0                | 27180716                                 |

# Approvals

|              |  |
|--------------|--|
| Approvals    | CSA<br>30 - KC Korea<br>UL + C-UL - FTTA<br>UR + C-UR (recognized) |
| Explanations | Declaration of conformity  |