

Rittal – The System.

Faster – better – everywhere.



SK 3239.300 Blue e+ outlet filter

State: 4/2/2026 (Source: rittal.com/us-en)

ENCLOSURES

POWER DISTRIBUTION

CLIMATE CONTROL

IT INFRASTRUCTURE

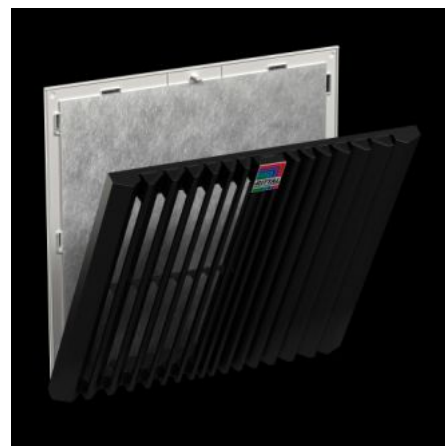
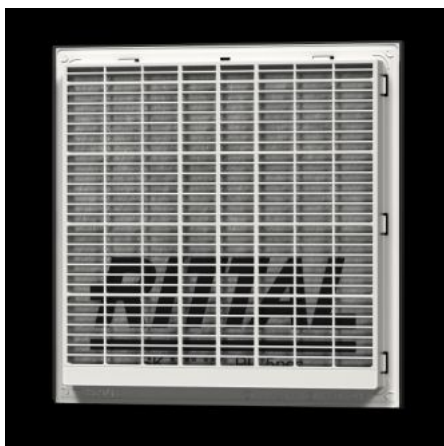
SOFTWARE & SERVICES

FRIEDHELM LOH GROUP



SK 3239.300 - Blue e+ outlet filter

The outlet filter is used in conjunction with the associated filter fan to dissipate lost heat out of the enclosures, to ventilate the enclosure and to protect temperature-sensitive components. This is done via the direct supply of ambient air that must be below the permissible temperature inside the enclosure.



Features

Model No.	SK 3239.300
Version	wall-mounted
Benefits	Easy filter change thanks to a new opening mechanism on the louvre grille Faster assembly on the enclosure due to optimized snap hooks Tool-free mounting
Material	Plastic
Color	RAL 7035
Supply includes	Outlet Filters Pleated filter
Mounting cut-out	Width of opening: 177 mm Cut-out height: 177 mm Width of opening: 6.97 " Cut-out height: 6.97 "
Suitable for Model No.	SK 3239.7xx

Features

Dimensions	Width: 204 mm Height: 204 mm Depth: 45.8 mm Width: 8.03 " Height: 8.03 " Depth: 1.8 "
Protection category NEMA	Type 12 with chopped fiber filter/pleated filter Type 3, 3R, 4, 4X with chopped fiber filter/pleated filter and hose-proof hood
Protection category IP to IEC 60529	IP 54 with chopped fiber filter/pleated filter IP 55 with pleated filter and absorber mat IP 56 with chopped fiber filter/pleated filter and hose-proof hood
Packaging unit	1 pc(s).
Net weight	0.37 kg
Gross weight	0.473 kg
Customs tariff number	39269097
ETIM 9	EC002513
ETIM 8	EC002513
ECLASS 8.0	27180706
Product description	SK Blue e+ outlet filter, for filter fan 3239.7xx, WH 204 x 204 mm, RAL 7035

Approvals

Approvals	UL + C-UL - FTTA UR + C-UR (recognized)
-----------	--