

Rittal – The System.

Faster – better – everywhere.



SK 3245.800 Blue e+ filter fan

State: 6/13/2026 (Source: rittal.com/us-en)

ENCLOSURES

POWER DISTRIBUTION

CLIMATE CONTROL

IT INFRASTRUCTURE

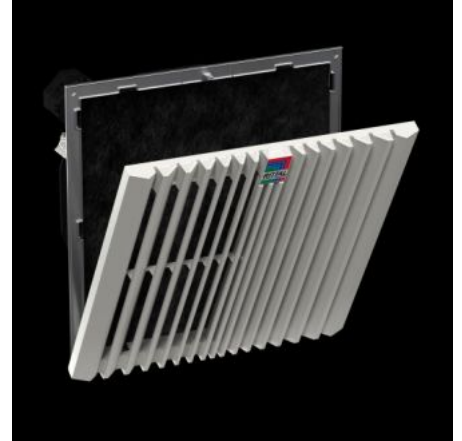
SOFTWARE & SERVICES

FRIEDHELM LOH GROUP



SK 3245.800 - Blue e+ filter fan EMC

Complete fan unit with EMC shielding for tool-free mounting on surfaces. Air throughput from 20–900 m³/h



Features

Model No.	SK 3245.800
Version	wall-mounted EMC
Product description	EMC fan-and-filter units have a high screening/dampening effect and meet performance level 2 as per EN 61587-3.
Benefits	Easy filter change thanks to a new opening mechanism on the louvre grille Faster assembly on the enclosure due to optimized snap hooks Diagonal fan technology ensures more uniform and consistent ventilation of the control cabinet through higher pressure stability. Tool-free mounting
Material	Plastic
Color	RAL 7035
Supply includes	Complete unit ready to install, including EMC filter mat
Fan	Diagonal, EC motor
Unimpeded air flow (with chopped fiber filter)	At 50 Hz: 931 m ³ /h At 50 Hz: 548 cfm

Features

Airflow with corresponding outlet filter including chopped fiber filter	At 50 Hz: 728 m ³ /h At 50 Hz: 428.48 cfm
Rated operating voltage	200 V - 240 V, 1~, 50 Hz/60 Hz
Rated power Pel	At 50 Hz: 173.5 W
Rated current max.	At 50 Hz: 1.38 A
Dimensions	Width: 323 mm Height: 323 mm Depth: 161 mm Width: 12.7 " Height: 12.7 " Depth: 6.34 "
Installation depth	141 mm 5.55 "
Mounting cut-out	Width of opening: 292 mm Cut-out height: 292 mm Width of opening: 11.5 " Cut-out height: 11.5 "
Protection category IP to IEC 60529	IP51 with fleece filter IP 56 with fleece filter and hose-proof hood
Protection category NEMA	Type 12 with fleece filter Type 3, 3R with fleece filter and hose-proof hood
Note	To improve energy efficiency and increase equipment service life, we recommend thermostats or temperature displays.
Operating temperature range	-25 °C...55 °C -13 °F...131 °F
Storage temperature range	-25 °C...70 °C -13 °F...158 °F
Noise pressure level	At 50 Hz: 72 dB(A)
Interfaces	0 - 10 V/PWM input Speed output potential-free fault indication contact RS485 (ModBus)
Packaging unit	1 pc(s).

Features

Net weight	4.01 kg
Gross weight	4.218 kg
Customs tariff number	84145915
ETIM 9	EC000320
ETIM 8	EC000320
ECLASS 8.0	27180716
Product description	SK Blue e+ filter fan, EMC, 931 m ³ /h, 200 V - 240 V, 1~, 50 Hz/60 Hz, WHD 323 x 323 x 161 mm, RAL 7035

Approvals

Approvals	CSA 30 - KC Korea UL + C-UL - FTTA UR + C-UR (recognized)
Explanations	Declaration of conformity