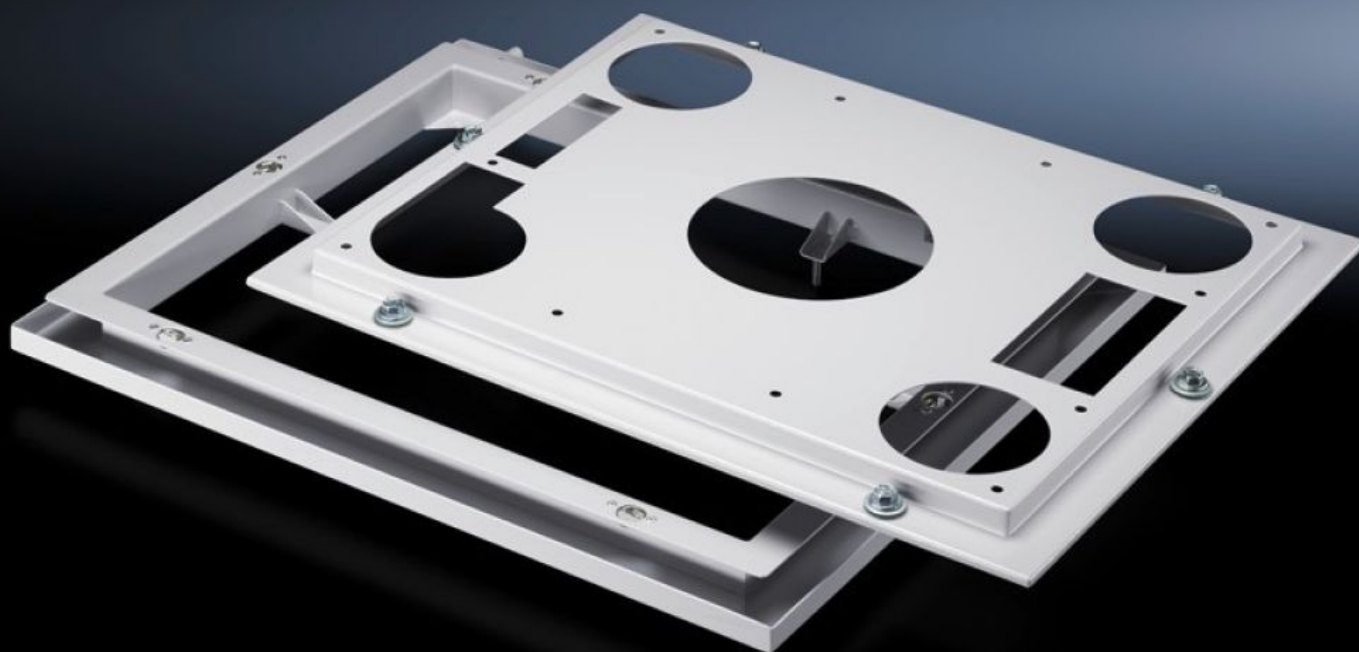
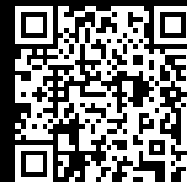


# Rittal – The System.

Faster – better – everywhere.



## SK 3286.800 Quick-change frame

State: 9/2/2025 (Source: [rittal.com/us-en](http://rittal.com/us-en))

ENCLOSURES

POWER DISTRIBUTION

CLIMATE CONTROL

IT INFRASTRUCTURE

SOFTWARE & SERVICES

FRIEDHELM LOH GROUP



# SK 3286.800 - Quick-change frame for roof-mounted cooling units

Together with the seal, the lower part of the alternate frame is screw-fastened to the enclosure. In this way, it is possible to install and remove the connector-ready cooling unit with quick-release fasteners with the upper part of the alternate frame pre-fitted on the cooling unit.

## Features

Model No.	SK 3286.800
Product description	The quick-change frame is more than just an alternate frame. Together with the seal, the lower part of the frame is screw-fastened to the enclosure. In this way, it is possible to install and remove the plug-in cooling unit with the upper part of the alternate frame previously mounted on the cooling unit with quick-release fasteners. During servicing work, this means shorter assembly times and so minimized downtime. What is more, the quick-change frame offers effective protection from the ingress of oil into the enclosure in oily atmospheres, thanks to its integral drainage trough.
Material	Carbon steel
Color	RAL 7035
Supply includes	Quick-change frame Seal Quick-release fasteners
Suitable for Model No.	3209.... 3210.... 3383.... 3384.... 3385....
Packaging unit	1 pc(s).
Net weight	7.073
Gross weight	7.4
PCF/VE (cradle-to-gate)	28.6 kg CO2 eq (Cat B)

# Features

Information regarding the PCF class	Category B: PCF value (cradle-to-gate) calculated approximately on the basis of the product weight and self-declared
Customs tariff number	73269098
EAN	4028177325418
ETIM 9	EC000331
ETIM 8	EC000331
ECLASS 8.0	27189272

# Approvals

Certificates	EAC
--------------	-----