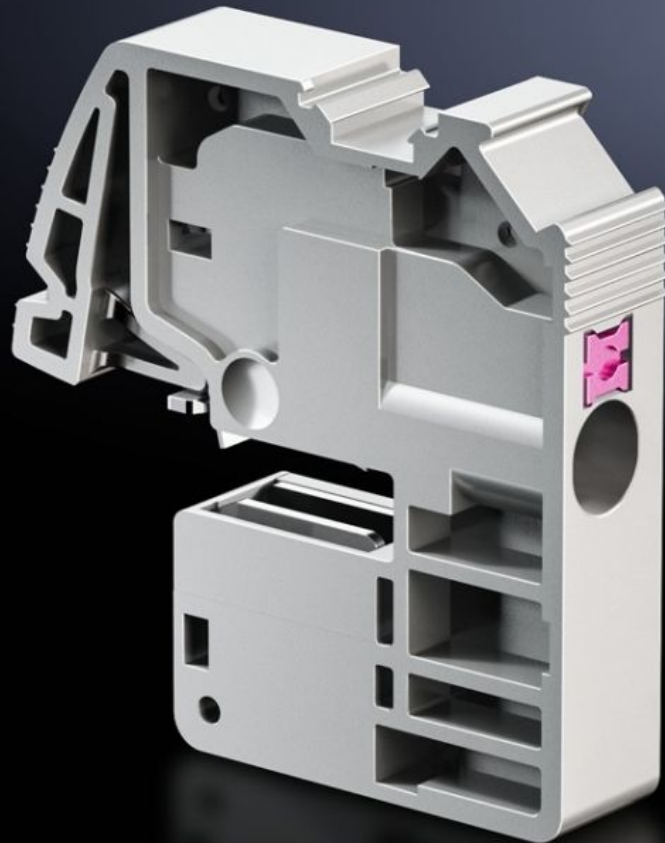


# Rittal – The System.

Faster – better – everywhere.



## SV 3450.505 Conductor terminal

State: 12/20/2025 (Source: [rittal.com/us-en](http://rittal.com/us-en))

ENCLOSURES

POWER DISTRIBUTION

CLIMATE CONTROL

IT INFRASTRUCTURE

SOFTWARE & SERVICES

FRIEDHELM LOH GROUP



# SV 3450.505 - Conductor terminal Push-in

For connecting round conductors.

## Features

Model No.	SV 3450.505
Benefits	Maintenance-free Time-saving plug-on mounting Terminal housing with integrated labeling fields Universal conductor terminals
Applications	For use as a busbar pick-off terminals for L, N, or PE conductors in switchgear or control systems as well as conductor connection terminal in meter enclosures. For mounting on E-Cu or CUPONAL busbars
Function principle	Fully insulated terminal for tool-free connection of conductors Conductor is released by the integral release pin
Material	Polyamide Fire protection corresponding to UL 94-V0
Color	RAL 7042
Test specification	IEC 60 999-1 IEC 60 947-7-1/-2
Connection of round conductors, fine wire with wire end ferrule	0.5 - 4 mm <sup>2</sup>
Connection of round conductors, fine wire without wire end ferrule	0.5 - 4 mm <sup>2</sup>
Connection of round conductors, multi-wire	0.5 - 4 mm <sup>2</sup>
Connection of round conductors, single-wire	0.5 - 6 mm <sup>2</sup>
For busbar thickness	5 mm 0.2 "
Packaging unit	10 pc(s).

## Features

---

Net weight	0.14
Gross weight	0.151
PCF/VE (cradle-to-gate)	0.5 kg CO2 eq (Cat B)
Information regarding the PCF class	Category B: PCF value (cradle-to-gate) calculated approximately on the basis of the product weight and self-declared
Customs tariff number	85369010
EAN	4028177813960
ETIM 9	EC000001
ETIM 8	EC000001
ECLASS 8.0	27141146

## Approvals

---

Approvals	ABS Lloyds Register of Shipping UR + C-UR (recognized)
Explanations	Declaration of conformity