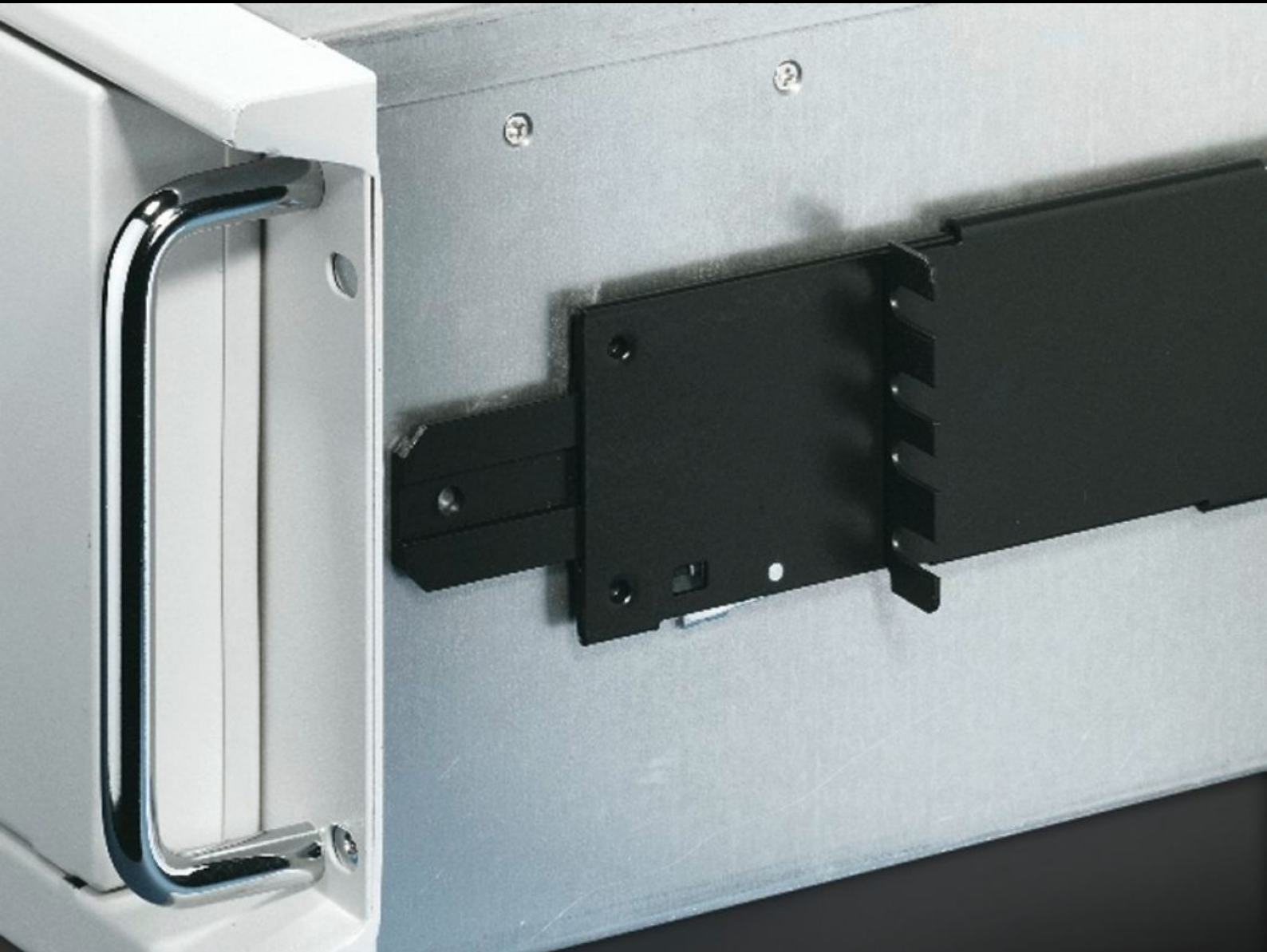


Rittal – The System.

Faster – better – everywhere.



TS 3659.190

Server telescopic slides

State: 6/19/2026 (Source: rittal.com/us-en)

ENCLOSURES

POWER DISTRIBUTION

CLIMATE CONTROL

IT INFRASTRUCTURE

SOFTWARE & SERVICES

FRIEDHELM LOH GROUP



TS 3659.190 - Server telescopic slides

For optimal server access - even when installed.

Features

Model No.	TS 3659.190
Version	For distance between levels of 559.0-789.0 mm
Product description	Ensure optimum accessibility to the server, even when built-in. For servers with a max. width of 426 mm.
Material	Carbon steel
Supply includes	Telescopic slide with mounting kit Mounting accessories
Pull-out depth	596.4 mm 23.5 "
Suitable for	Enclosure type: TS: 800 mm Enclosure type: TS IT Enclosure type: TS: 31.5 " Enclosure type: TS IT
Load capacity	30 kg
Note	Only in conjunction with L-shaped profile rails
Packaging unit	2 pc(s).
Net weight	2.946 kg
Gross weight	3.146 kg
Customs tariff number	73269098
ETIM 9	EC002520
ETIM 8	EC002520
ECLASS 8.0	27189261
Product description	TS server telescopic slides, for D: 800 mm, extension piece: 596.4 mm, for TS, TS IT