

Rittal – The System.

Faster – better – everywhere.



SZ 4000.058

Attachment with slope

State: 8/2/2025 (Source: [rittal.com/us-en](https://www.rittal.com/us-en))

ENCLOSURES

POWER DISTRIBUTION

CLIMATE CONTROL

IT INFRASTRUCTURE

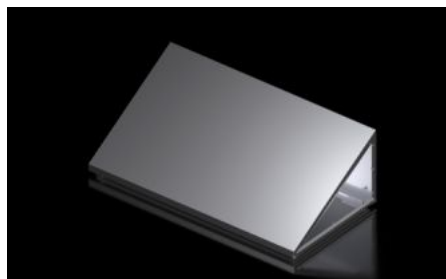
SOFTWARE & SERVICES

FRIEDHELM LOH GROUP



SZ 4000.058 - Attachment with slope for VX

For retrofitting individual or aligned VX25 enclosures made of painted carbon steel, with the largest possible opening at the joining point to the neighboring roof.



Features

Model No.	SZ 4000.058
Technical specifications	Roof overhang in front: 8 mm
Material	Carbon steel
Surface finish	Powder-coated
Color	RAL 7035
Supply includes	Assembly components and seals
Dimensions	Height, front: 35 mm Height, front: 1.38 ~
Protection category IP to IEC 60529	IP 55
Protection category NEMA	NEMA 12
Note on Model No.:	Please quote the complete design code on all inquiries and orders. Delivery times on request.

Features

Execution code	Roof pitch: 1 = 30° (EHEDG standard) or 2 = 45° Enclosure width: ... mm (max. 1200 mm) Enclosure depth: ... mm 1 = for VX single enclosure 2 = for aligned VX end enclosure on the left (each with a T-profile seal and connection accessories) 3 = for aligned VX end cabinet on the right (each with a T-profile seal and connection accessories) 4 = for aligned VX enclosure center (each with a T-profile seal and connection accessories) Example: 1 - 800 - 600 - 1 (attachment with slope with 30° roof pitch - width 800 mm - depth 600 mm - for VX single cabinet)
Packaging unit	1 pc(s).
Net weight	2
Gross weight	2.1
EAN	4028177937130