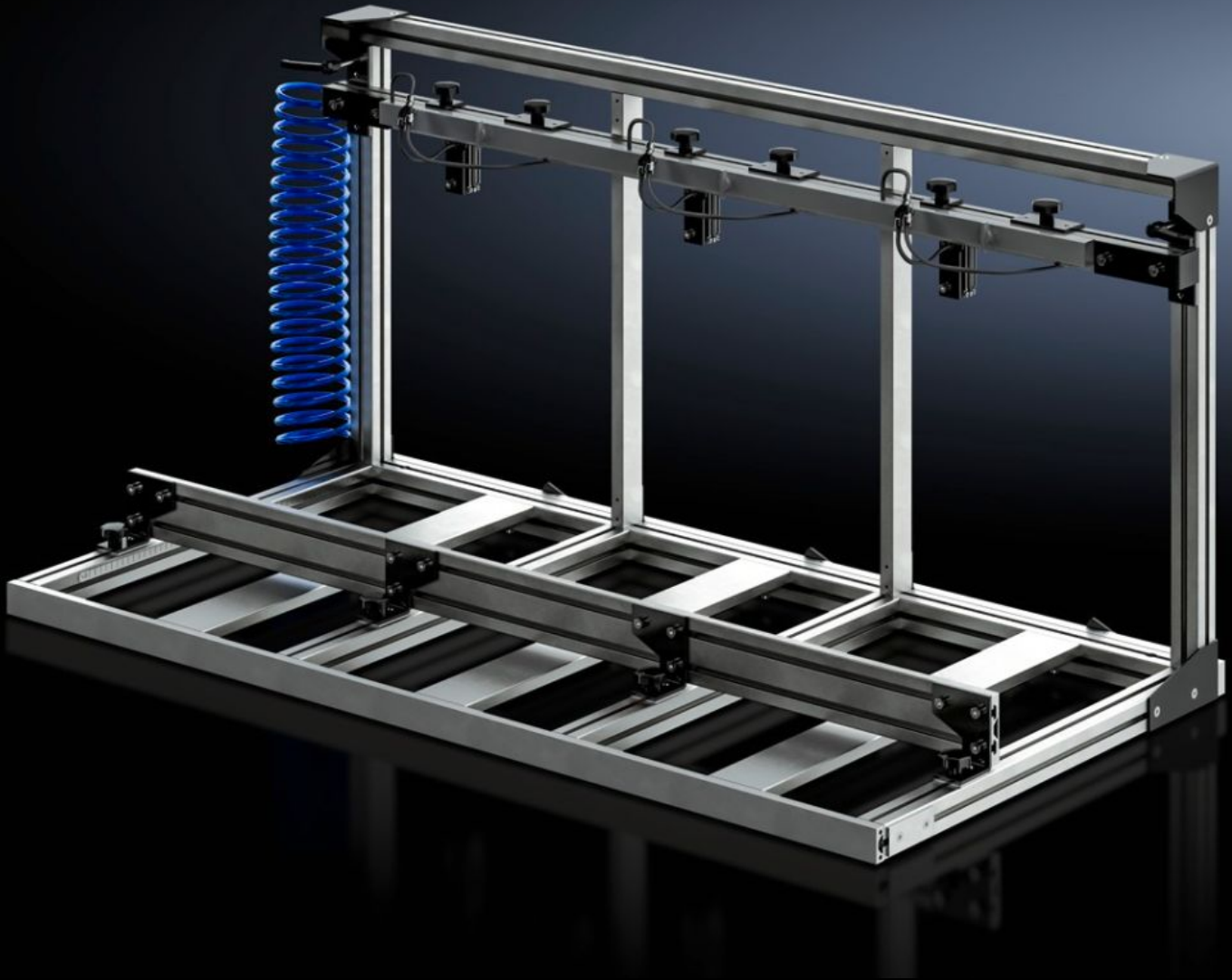


Rittal – The System.

Faster – better – everywhere.



AS 4050.061 Clamping frame

State: 5/31/2026 (Source: rittal.com/us-en)

ENCLOSURES

POWER DISTRIBUTION

CLIMATE CONTROL

IT INFRASTRUCTURE

SOFTWARE & SERVICES

FRIEDHELM LOH GROUP



AS 4050.061 - Clamping frame

Parallel machining of enclosures in the machining area for cubic parts on the Perforex BC machining center and Perforex Milling Terminal MT for reduced setting-up time and increased productivity.

Features

Model No.	AS 4050.061
Version	Pneumatic clamping device
Product description	Enables enclosures to be processed simultaneously in the cube machining area of the Perforex machining center BC and Perforex Milling Terminal MT.
Possible number of terminal Boxes for parallel processing	4
Note	The use of the clamping frame (Model No. 4050.080) with the BC machining center (Model No. 4050.230) is only possible with the two-door variant.
Suitable for Model No.	4050.107 4050.108 4050.230 4055.920 4055.921 4055.925 4055.926
Suitable for	Perforex BC 1007 HS Perforex BC 1008 HS Perforex BC 2014 HS Perforex MT 2101 Perforex MT 2101 S Perforex MT 2201 Perforex MT 2201 S
Dimensions of clampable enclosures max.	Width: 200 mm Height: 300 mm Depth: 300 mm

Features

Dimensions of clampable enclosures min.	Width: 90 mm Height: 70 mm Depth: 70 mm
Packaging unit	1 pc(s).
Net weight	25 kg
Gross weight	25 kg
Customs tariff number	84669360
ETIM 9	EC003010
ETIM 8	EC003010
ECLASS 8.0	36609190
Product description	AS Multiple fastening, BC 1007/1008/2014, Clamping frame for several small enclosures, - 4 clamping positions in the frame, - Pneumatic clamping device, - Min. enclosure dimensions (W x H x D): 90 x 70 x 70 mm