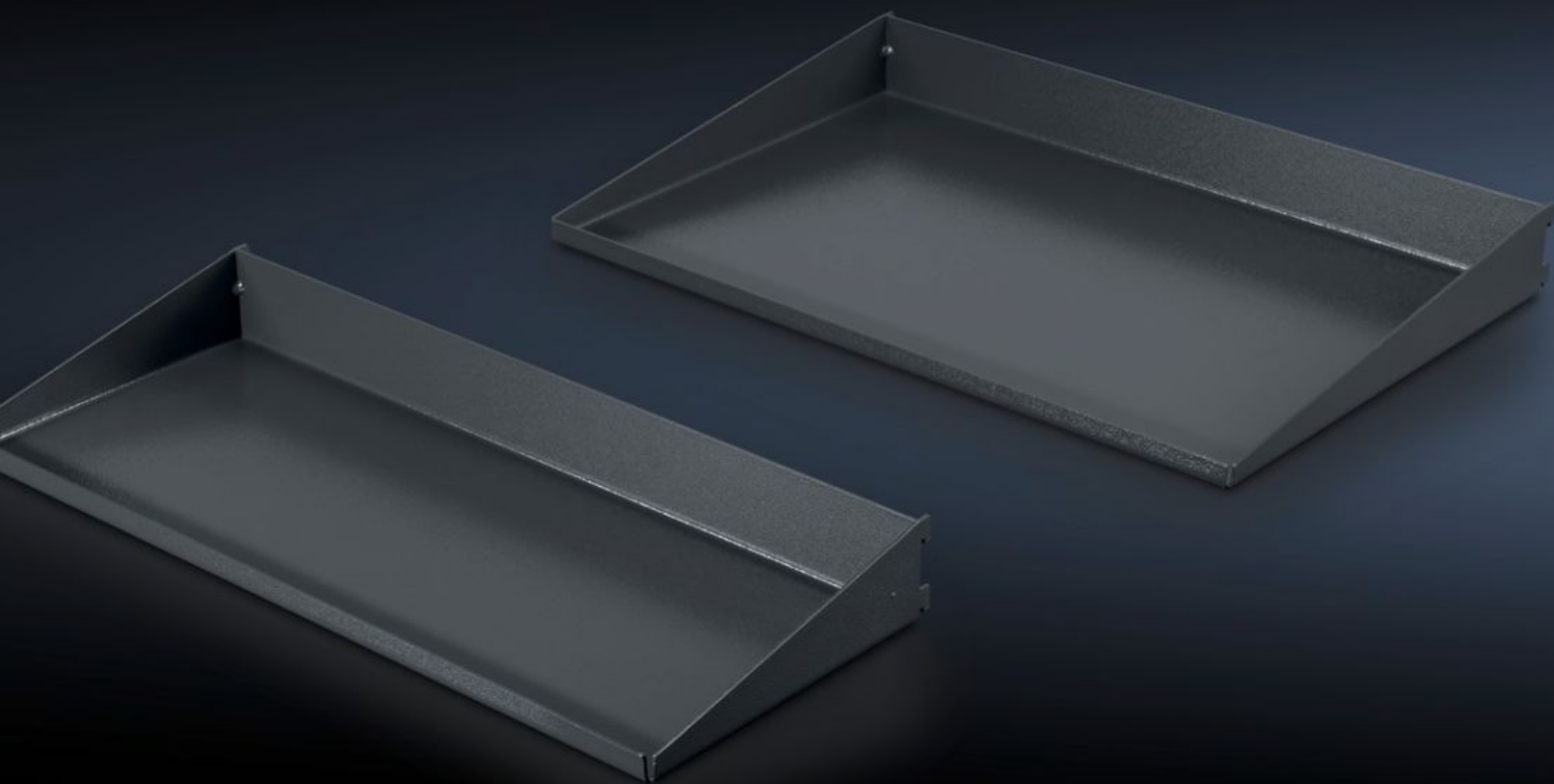
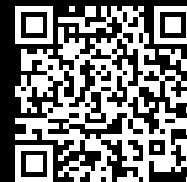


# Rittal – The System.

Faster – better – everywhere.



## AS 4051.101 Shelf

State: 8/6/2025 (Source: [rittal.com/us-en](https://www.rittal.com/us-en))

ENCLOSURES

POWER DISTRIBUTION

CLIMATE CONTROL

IT INFRASTRUCTURE

SOFTWARE & SERVICES

FRIEDHELM LOH GROUP



# AS 4051.101 - Shelf for WS 540

Shelf set for mounting below the desktop. Differing depths of the shelves provide sufficient knee and legroom for sitting work at the workstation.



## Features

Model No.	AS 4051.101
Product description	Shelf set for mounting below the desktop. Differing depths of the shelves provide sufficient knee and legroom for sitting work at the workstation.
Benefits	For optimal use of the space below the desktop without restricting legroom Tool-free installation of the shelves by simple hanging
Technical specifications	Upper floor (W x D): 510 x 335 mm Lower floor (W x D): 510 x 200 mm
Material	Carbon steel
Color	RAL 7016
Supply includes	2 shelves
Suitable for Model No.	4051.100
Packaging unit	2 pc(s).
Customs tariff number	73269098
EAN	4028177957411
ETIM 9	EC002778
ETIM 8	EC002778
ECLASS 8.0	21109215