

# Rittal – The System.

Faster – better – everywhere.



## AS 4051.261 Wire switch

State: 4/22/2026 (Source: [rittal.com/us-en](http://rittal.com/us-en))

ENCLOSURES

POWER DISTRIBUTION

CLIMATE CONTROL

IT INFRASTRUCTURE

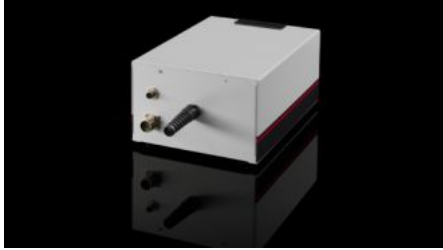
SOFTWARE & SERVICES

FRIEDHELM LOH GROUP



# AS 4051.261 - Wire switch for Wire Handling System

The wire switch of the Wire Handling System distributes finished wires to up to four wiring workstations on a project-specific basis.



## Features

Model No.	AS 4051.261
Benefits	<ul style="list-style-type: none"><li>Up to 90% time savings providing wire</li><li>Up to 20% time savings for the wiring process thanks to the Eplan Smart Production</li><li>Tool-free hose connection via a coupling</li><li>Automatic wire supply to a maximum of 4 wiring workstations</li><li>No wire sorting required</li><li>Wire fastening according to just-in-time and just-in-sequence principles</li><li>Fully automatic wire picking</li><li>Direct addressing helps to minimize errors in workstation commissioning</li><li>Reduced storage space, direct material supply at the wiring workstation</li></ul>
Technical specifications	Minimum hose feed length 5 m, maximum 80 m
Support area	<ul style="list-style-type: none"><li>Width: 230 mm</li><li>Height: 155 mm</li><li>Depth: 320 mm</li><li>Width: 9.06 "</li><li>Depth: 12.6 "</li></ul>
Note	<p>The wire handling system may be retrofitted into any existing machine</p> <p>Please consult your Rittal specialist advisor for the exact design of the installation routing</p>

# Features

---

Suitable for Model No.	4051.229 4051.260 4051.264 4051.205 4051.210
Customs tariff number	84879090
Product description	The wire switch of the Wire Handling System distributes finished wires to up to four wiring workstations on a project-specific basis.

---