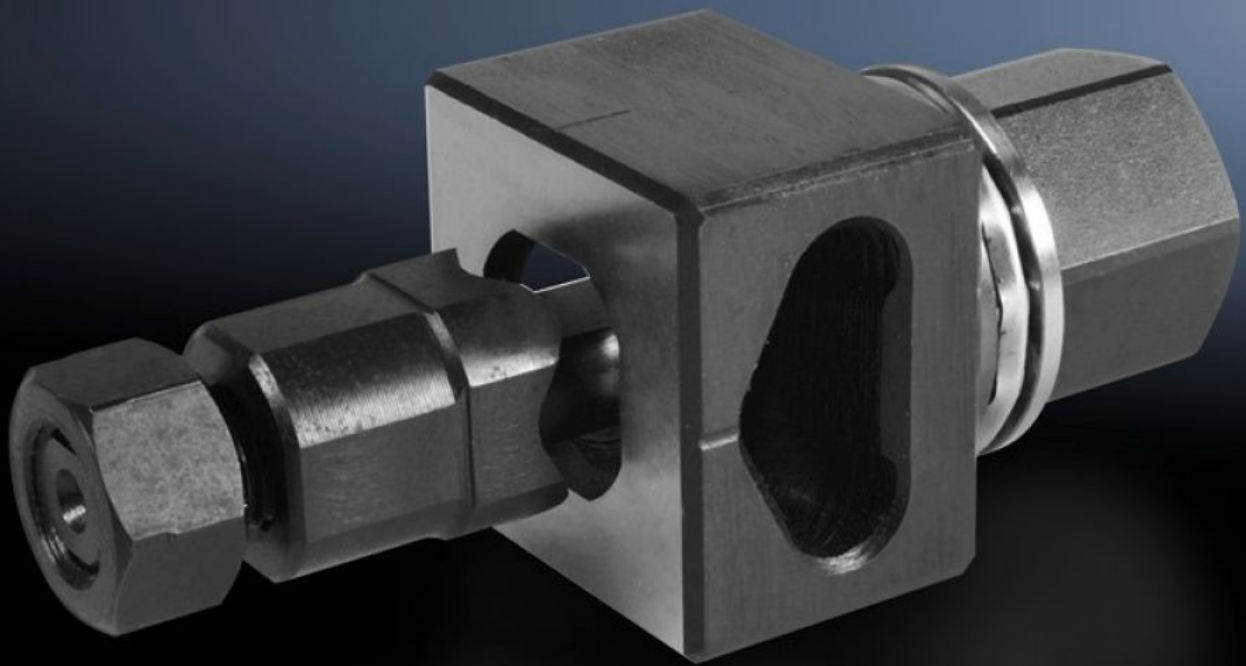


Rittal – The System.

Faster – better – everywhere.



AS 4055.441

Hole punch, special contour

State: 6/15/2026 (Source: rittal.com/us-en)

ENCLOSURES

POWER DISTRIBUTION

CLIMATE CONTROL

IT INFRASTRUCTURE

SOFTWARE & SERVICES

FRIEDHELM LOH GROUP



AS 4055.441 - Hole punch, special contour for carbon steel

For punching cut-outs with a special shape

Features

Model No.	AS 4055.441
Version	Flattened to 20.1 mm on 4 sides
Product description	For punching cut-outs with a special shape. The hole punch is operated with a wrench or hydraulic punch.
Benefits	With side chute for waste No jamming of die
Supply includes	Die Stamp Tension bolts Lock nut Thrust nut with ball bearing Adapter for hydraulics Plastic case
Workable material	Carbon steel
Max. material thickness that can be machined for sheet steel	2 mm
Ø hole punch	22.5 mm
Packaging unit	1 pc(s).
Net weight	0.723 kg
Gross weight	0.753 kg
Customs tariff number	82073010
ETIM 9	EC000156
ETIM 8	EC000156
ECLASS 8.0	21049047

Features

Product description

Hole punch, special contour for sheet steel