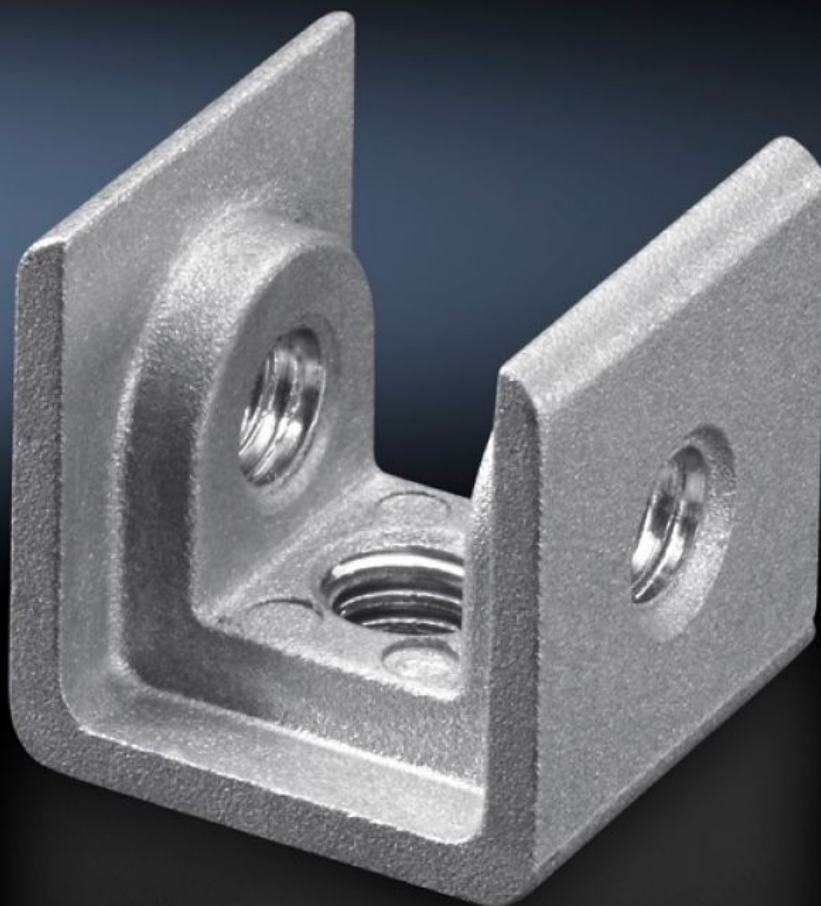


Rittal – The System.

Faster – better – everywhere.



PS 4157.000

U-nut

State: 9/8/2025 (Source: [rittal.com/us-en](https://www.rittal.com/us-en))

ENCLOSURES

POWER DISTRIBUTION

CLIMATE CONTROL

IT INFRASTRUCTURE

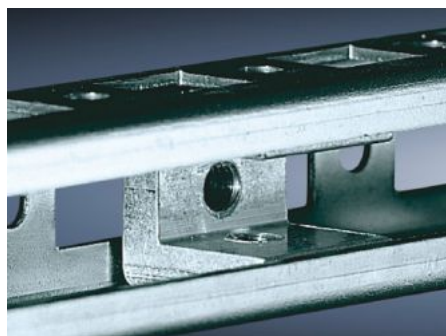
SOFTWARE & SERVICES

FRIEDHELM LOH GROUP



PS 4157.000 - U-nut

To mount punched rails and chassis on angle brackets, mounting brackets and support brackets.



Features

Model No.	PS 4157.000
Installation options	Punched Rails, 23 x 23 mm Mounting chassis 23 x 73 mm Mounting chassis 45 x 88 mm System chassis 23 x 73 mm
Note	For mounting punched rails and mounting chassis on angle brackets, mounting brackets and support brackets, we recommend U nuts with M6 thread
Dimensions	Thread: M5
Thread	M5
Packaging unit	20 pc(s).
Net weight	0.34
Gross weight	0.36
Customs tariff number	73181692
EAN	4028177092822
ETIM 9	EC000096
ETIM 8	EC000096
ECLASS 8.0	23110804