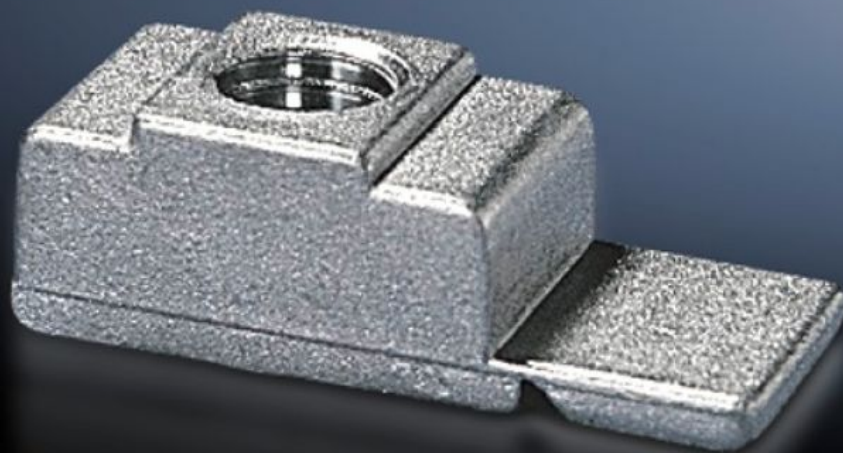


# Rittal – The System.

Faster – better – everywhere.



## TS 4163.000 Threaded blocks

State: 4/2/2026 (Source: [rittal.com/us-en](http://rittal.com/us-en))

ENCLOSURES

POWER DISTRIBUTION

CLIMATE CONTROL

IT INFRASTRUCTURE

SOFTWARE & SERVICES

FRIEDHELM LOH GROUP



# TS 4163.000 - Threaded blocks

Used on enclosures and rails with rectangular 12.5 x 10.5 mm system punching with snap-off insertion aid, made from die-cast zinc.



## Features

Model No.	TS 4163.000
Product description	With snap-off insertion aid, made from die-cast zinc.
Installation options	On the horizontal and vertical VX enclosure section On the vertical TS, VX SE enclosure section via adapter rail for VX compatibility On the horizontal TS enclosure section On the horizontal VX SE enclosure section, bottom On the horizontal VX SE enclosure section top, in depth On punched rails 23 x 23 mm On mounting chassis 23 x 73 mm On mounting chassis 45 x 88 mm On 23 x 64 mm system chassis On 23 x 73 mm system chassis On 23 x 89 mm system chassis, stainless steel On enclosures and rails with rectangular hole profile 12.5 x 10.5 mm
Dimensions	Thread: M8
Suitable for enclosure type	VX TS VX SE
Thread	M8
Packaging unit	50 pc(s).
Net weight	0.4 kg

# Features

---

Gross weight	0.461 kg
Customs tariff number	73181692
ETIM 9	EC002358
ETIM 8	EC002358
ECLASS 8.0	23110815
Product description	TS Threaded block, for thread M8

---