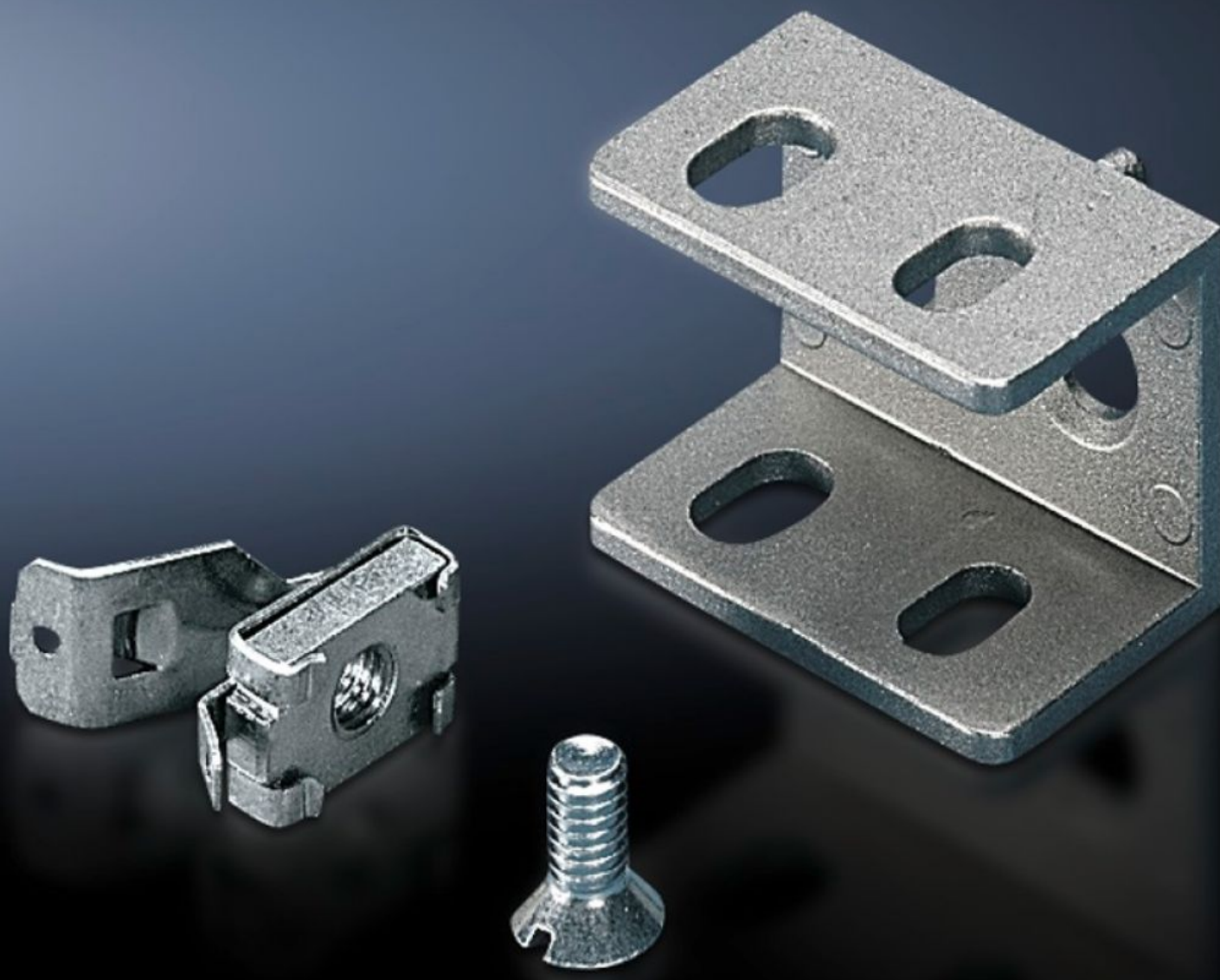


Rittal – The System.

Faster – better – everywhere.



SZ 4182.000

Mounting Bracket PS

State: 12/7/2025 (Source: [rittal.com/us-en](https://www.rittal.com/us-en))

ENCLOSURES

POWER DISTRIBUTION

CLIMATE CONTROL

IT INFRASTRUCTURE

SOFTWARE & SERVICES

FRIEDHELM LOH GROUP



SZ 4182.000 - Mounting Bracket PS for VX, TS, VX SE

For variable attachment of 23 x 23 mm punched rails.



Features

| | |
|-----------------------------|---|
| Model No. | SZ 4182.000 |
| Product description | For variable attachment of 23 x 23 mm punched rails. |
| Material | Die-cast zinc |
| Supply includes | 1 set = 1 mounting bracket, 1 screw M6 x 12 mm, 1 cage nut M6 |
| Installation options | <p>Optionally flush with: Outer enclosure edge or enclosure clearance width</p> <p>On the vertical TS enclosure section via snap-on nuts 8800.806 or via adapter rail for VX compatibility, offset in the height, via TS punched rail 25 x 38 mm</p> <p>On the vertical VX, VX SE enclosure section via adapter rail for VX compatibility</p> <p>On the horizontal VX, TS enclosure section</p> <p>On the horizontal VX SE enclosure section, bottom</p> <p>On the horizontal VX SE enclosure section top, in depth</p> <p>On enclosures and rails with rectangular hole profile 12.5 x 11 mm</p> |
| Note | U nuts (recommended: M6) |
| Suitable for enclosure type | VX TS VX SE |
| Packaging unit | 24 pc(s). |
| Net weight | 1.2 |
| Gross weight | 1.509 |

Features

| | |
|-----------------------|---------------|
| Customs tariff number | 73182900 |
| EAN | 4028177093362 |
| ETIM 9 | EC002625 |
| ETIM 8 | EC002625 |
| ECLASS 8.0 | 27189234 |