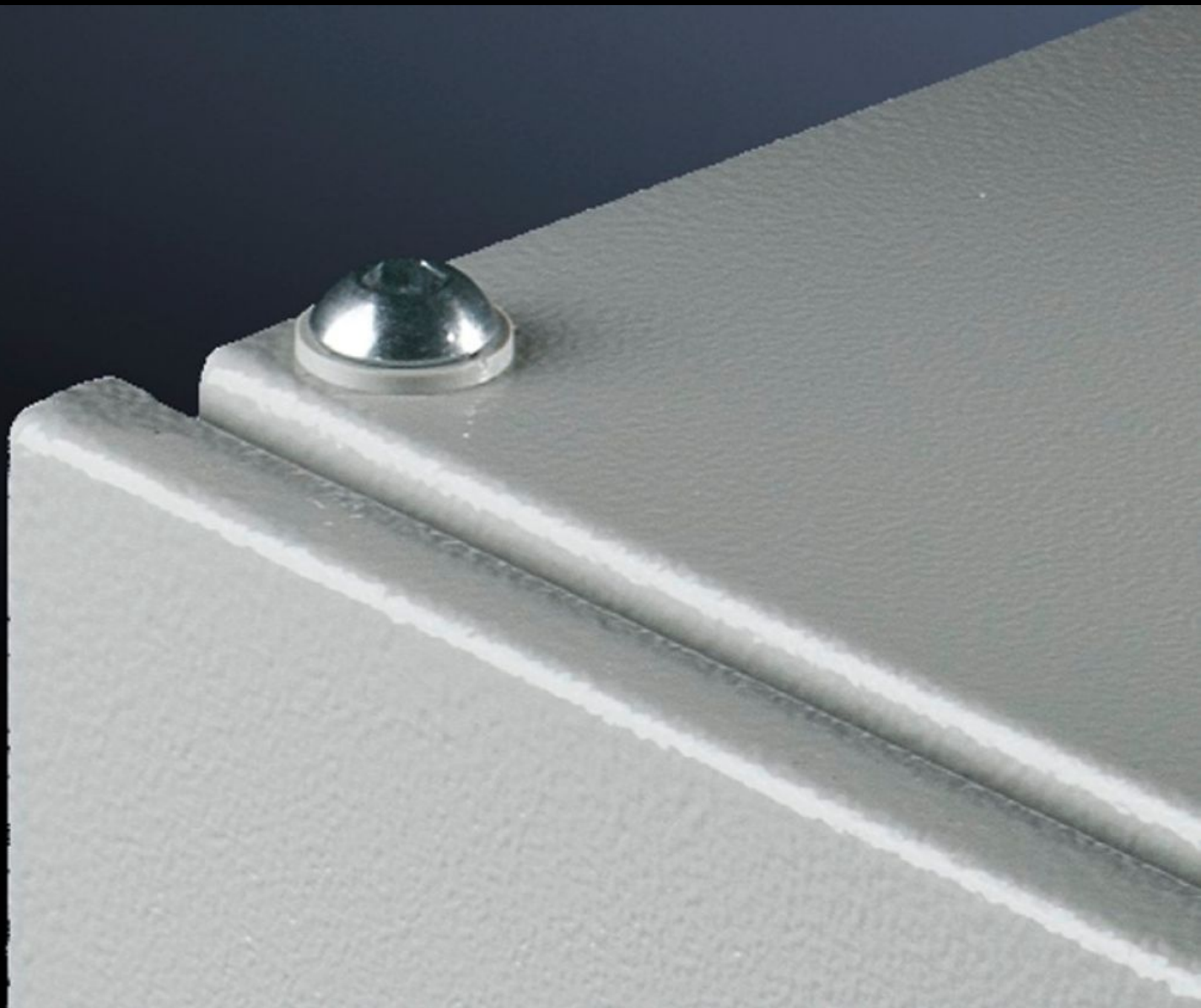
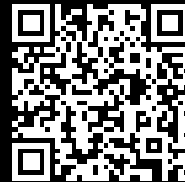


Rittal – The System.

Faster – better – everywhere.



PS 4198.000

Roof mounting screw

State: 1/29/2026 (Source: [rittal.com/us-en](https://www.rittal.com/us-en))

ENCLOSURES

POWER DISTRIBUTION

CLIMATE CONTROL

IT INFRASTRUCTURE

SOFTWARE & SERVICES

FRIEDHELM LOH GROUP



PS 4198.000 - Roof mounting screw

For screw-fastening the roof plate instead of eyebolts. With contact washers for equipotential bonding.

Features

Model No.	PS 4198.000
Product description	To screw-fasten the roof plate in place of the transportation eyebolts. With contact washers for equipotential bonding.
Material	Steel
Surface finish	Zinc-plated
Supply includes	20 M12 x 20 hex-socket pan-head screws 20 serrated lock washers A 12.5
Dimensions	Thread: M12
Packaging unit	20 pc(s).
Net weight	0.5
Gross weight	0.54
Customs tariff number	73181900
EAN	4028177093713
E-Number Sweden	E3404305
ETIM 9	EC003861
ETIM 8	EC003861
ECLASS 8.0	23110190