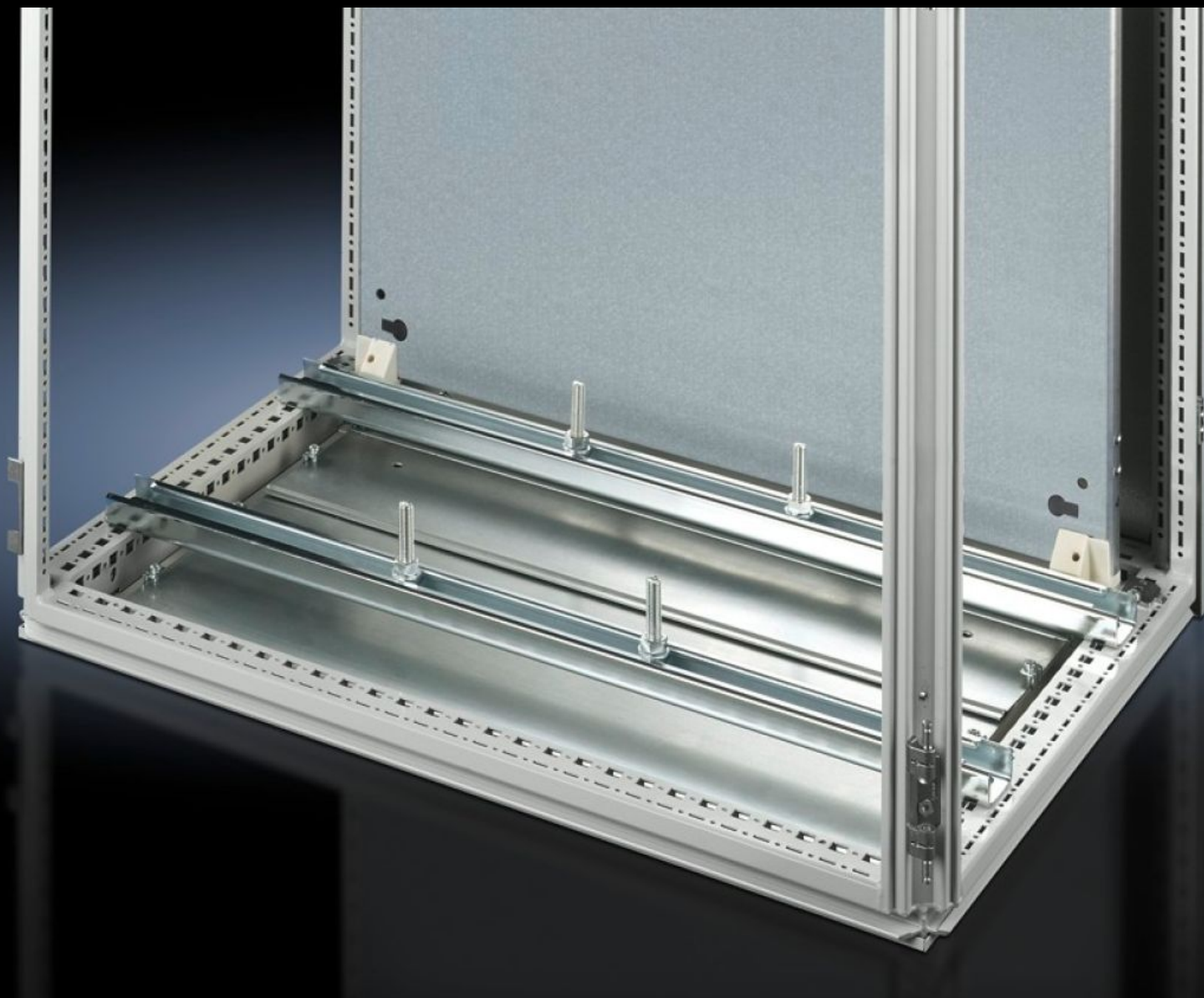
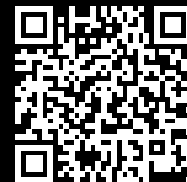


# Rittal – The System.

Faster – better – everywhere.



## SZ 4362.000

## System Support Rails

State: 8/14/2025 (Source: [rittal.com/us-en](https://www.rittal.com/us-en))

ENCLOSURES

POWER DISTRIBUTION

CLIMATE CONTROL

IT INFRASTRUCTURE

SOFTWARE & SERVICES

FRIEDHELM LOH GROUP



# SZ 4362.000 - System Support Rails

For heavy installed equipment such as transformers. T-head screw and slot in the support rail accommodate all mounting dimensions.



## Features

Model No.	SZ 4362.000
Product description	Utilized to support heavy components (transformers, motors, drives, pumps) that are mounted within the enclosure. T-head screw and slot in the support rail accommodate a wide range of mounting dimensions.
Material	Carbon steel
Surface finish	Zinc-plated
Supply includes	2 system support rails (45 x 25 mm) 4 T-head screws M12 x 60 mm Fasteners
Installation options	On the vertical TS enclosure section via snap-on nuts 8800.806 or via adapter rail for VX compatibility, offset in the height, via TS punched rail 25 x 38 mm On the horizontal VX SE enclosure section in the width at the bottom and top, or in the depth at the bottom and top (without mounting plate) using snap-on nut 8800.808 On the horizontal TS enclosure section: in the width, in the depth (without mounting plate) On base configuration rail for TP

# Features

Suitable for	Enclosure type: TS Width: = 800 mm Enclosure type: TS Width: = 31.5 "
Packaging unit	2 pc(s).
Net weight	3.69
Gross weight	4.16
Customs tariff number	73269098
EAN	4028177099692
ETIM 9	EC000293
ETIM 8	EC001285
ECLASS 8.0	27189261