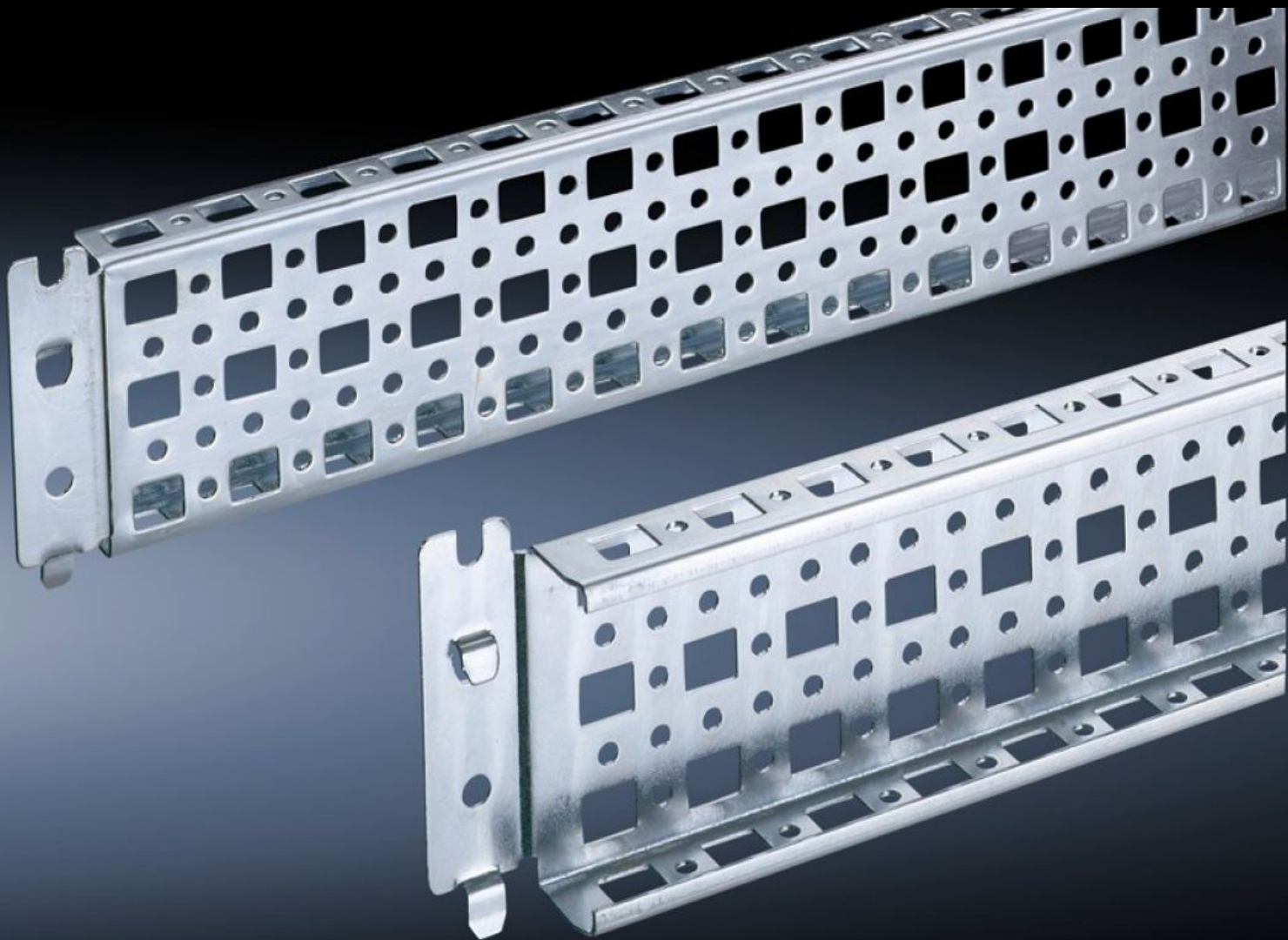


Rittal – The System.

Faster – better – everywhere.



SZ 4373.000

PS System Chassis 23 x 73 mm

State: 4/23/2026 (Source: rittal.com/us-en)

ENCLOSURES

POWER DISTRIBUTION

CLIMATE CONTROL

IT INFRASTRUCTURE

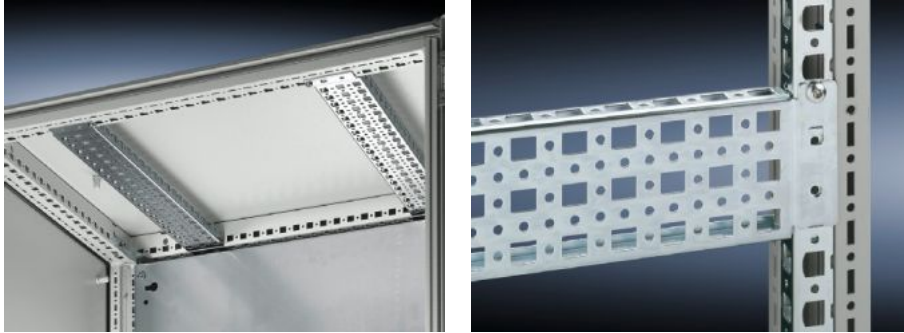
SOFTWARE & SERVICES

FRIEDHELM LOH GROUP



SZ 4373.000 - PS System Chassis 23 x 73 mm for TS, VX SE

Mounted directly on horizontal TS enclosure profiles. Can only be mounted on vertical TS enclosure profiles using an adapter. Simply locate into the TS punchings and secure.



Features

Model No.	SZ 4373.000
Product description	Variable, with 5 rows of holes for universal skeleton structures or partial assembly. Simply locate into the system punchings and secure.
Material	Carbon steel
Surface finish	Zinc-plated
Supply includes	Assembly screws
Installation options	On the vertical TS, VX SE enclosure section via adapter rail for VX compatibility On the horizontal TS enclosure section On the horizontal VX SE enclosure section, bottom On the horizontal VX SE enclosure section, top, in the width
Suitable for	Enclosure type: TS VX SE Width/depth: 1,000 mm Enclosure type: TS VX SE Width/depth: 39.4 "
Packaging unit	4 pc(s).

Features

Net weight	4.152 kg
Gross weight	4.35 kg
Customs tariff number	73269098
ETIM 9	EC002625
ETIM 8	EC002625
ECLASS 8.0	27189234
Product description	SZ TS punched section with mounting flange, 23 x 73 mm, for TS, SE, for W/D: 1000 mm