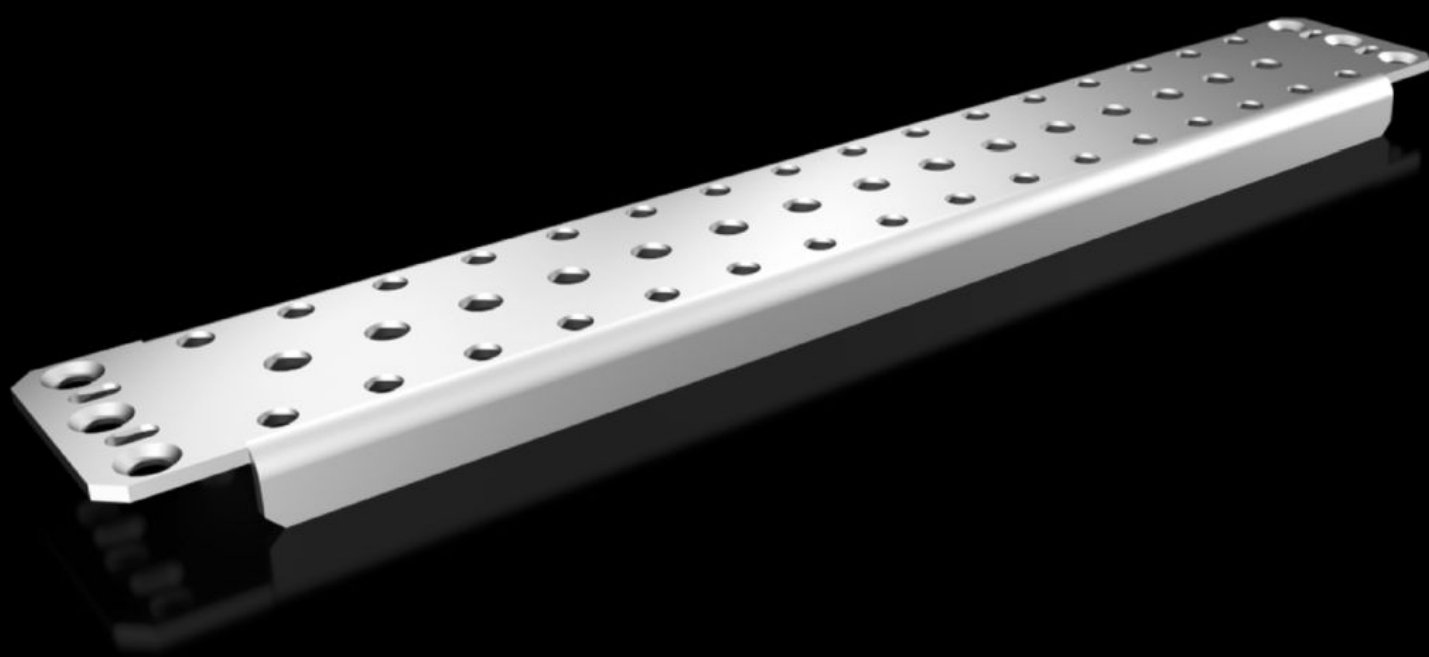
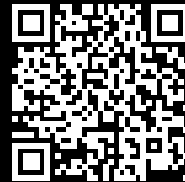


Rittal – The System.

Faster – better – everywhere.



TS 4395.000

Support rail 75 x 20 mm

State: 1/31/2026 (Source: [rittal.com/us-en](https://www.rittal.com/us-en))

ENCLOSURES

POWER DISTRIBUTION

CLIMATE CONTROL

IT INFRASTRUCTURE

SOFTWARE & SERVICES

FRIEDHELM LOH GROUP



TS 4395.000 - Support rail 75 x 20 mm for VX, TS, VX SE

For heavy equipment such as base isolators or transformers.



Features

Model No.	TS 4395.000
Version	Slotted
Product description	For heavy equipment such as base isolators or transformers.
Material	Carbon steel
Surface finish	Zinc-plated
Supply includes	Assembly components
Installation options	<p>On the inner mounting level, on VX enclosure profile</p> <p>On the vertical TS enclosure section via snap-on nuts 8800.806 or via adapter rail for VX compatibility, offset in the height, via TS punched rail 25 x 38 mm</p> <p>On the horizontal TS enclosure section: in the width, in the depth</p> <p>On the horizontal VX SE enclosure section in the width at the bottom and top, or in the depth at the bottom and top using snap-on nut 8800.808</p>

Features

Suitable for	Enclosure type: VX TS VX SE Width: = 500 mm Depth: = 500 mm Enclosure type: VX TS VX SE Width: = 19.7 " Depth: = 19.7 "
Packaging unit	4 pc(s).
Net weight	5.008
Gross weight	5.4
PCF/VE (cradle-to-gate)	20.1 kg CO2 eq (Cat B)
Information regarding the PCF class	Category B: PCF value (cradle-to-gate) calculated approximately on the basis of the product weight and self-declared
Customs tariff number	73269098
EAN	4028177100374
ETIM 9	EC001285
ETIM 8	EC001285
ECLASS 8.0	27189261