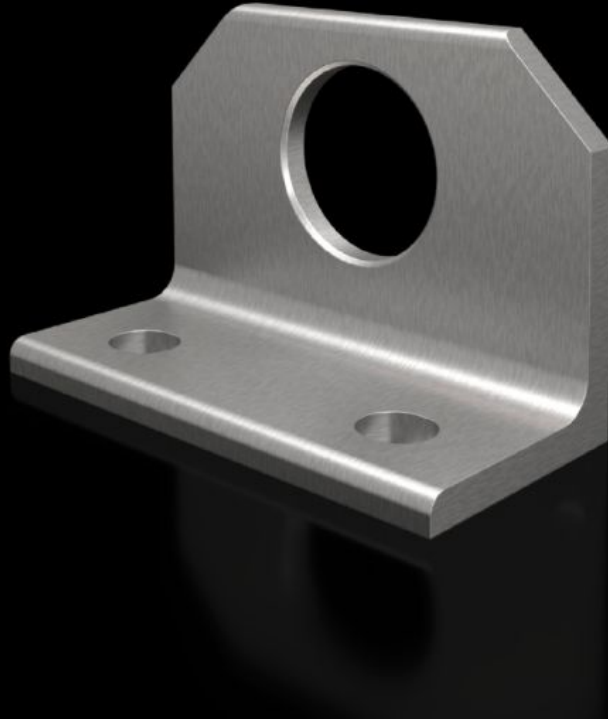


# Rittal – The System.

Faster – better – everywhere.



## SZ 4540.500 Combination angle

State: 6/3/2026 (Source: [rittal.com/us-en](http://rittal.com/us-en))

ENCLOSURES

POWER DISTRIBUTION

CLIMATE CONTROL

IT INFRASTRUCTURE

SOFTWARE & SERVICES

FRIEDHELM LOH GROUP



# SZ 4540.500 - Combination angle for VX, TS

For optimum distribution of tensile forces during transportation of bayed enclosures by crane.



## Features

Model No.	SZ 4540.500
Product description	For optimum distribution of tensile forces during transportation of bayed enclosures by crane.
Material	Stainless steel 1.4301 (AISI 304)
Supply includes	Assembly components
Suitable for	Enclosure type: VX TS
Type rating according to UL 50E	Type 1 Type 12
Protection category NEMA	NEMA 1, 12
Protection category IP to IEC 60529	IP 55
Packaging unit	2 pc(s).
Net weight	1.2 kg
Gross weight	1.4 kg
PCF/VE (cradle-to-gate)	5.3 kg CO2 eq (Cat B)
Information regarding the PCF class	Category B: PCF value (cradle-to-gate) calculated approximately on the basis of the product weight and self-declared
Customs tariff number	73182900

# Features

---

ETIM 9	EC002622
ETIM 8	EC002622
ECLASS 8.0	27189234
Product description	SZ combination bracket stainless steel

---

# Approvals

---

Approvals	UL + C-UL - FTTA
-----------	------------------

---