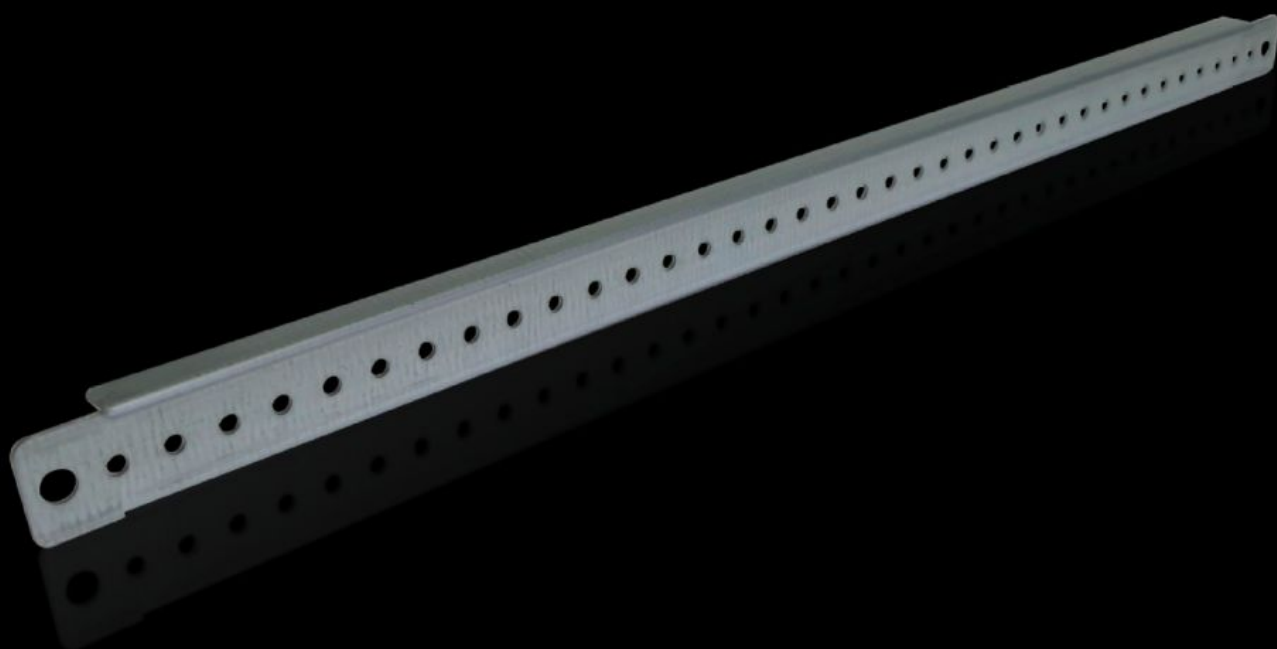


Rittal – The System.

Faster – better – everywhere.



TS 4596.000 Support Strip

State: 5/8/2025 (Source: rittal.com/us-en)

ENCLOSURES

POWER DISTRIBUTION

CLIMATE CONTROL

IT INFRASTRUCTURE

SOFTWARE & SERVICES

FRIEDHELM LOH GROUP



TS 4596.000 - Support Strip for VX, TS, VX SE, TP, AX

For simple attachment of cable ducts, cable conduit holders, contact hazard protection cover plates, equipment installed on the door, cable clamping and attachment.



Features

Model No.	TS 4596.000
Product description	For simple attachment of cable ducts, cable conduit holders, contact hazard protection cover plates, equipment installed on the door, cable clamping and attachment.
Technical specifications	4.5 mm diameter hole on a 25 mm hole pattern
Material	Carbon steel
Surface finish	Zinc-plated
Supply includes	Assembly components
Length	490 mm 19.3 "
Suitable for door width	600 mm 23.6 "
Installation options VX	In door width 600 mm
Installation options VX SE	In door width 600 mm In enclosure width/depth 500 mm, on the inner mounting level
Installation options AX	In door width 500 mm, with 3-point locking system in the locking door In enclosure width 500 mm and in enclosure height 600 mm, in conjunction with rail for interior installation AX

Features

AX stainless steel installation options	In enclosure width 500 mm In enclosure height 600 mm
Installation options AX plastic	In door width 600 mm
Installation options for 3-part AX	In the enclosure depth 673 mm or in the width of the wall section
Installation options PC	In door width 600 mm
Installation options IW	In door width 600 mm
Installation options TS	In door width 600 mm In enclosure width/depth 500 mm, on the inner mounting level
installation options VX Base, stainless steel	In base/plinth depth 600 mm, in conjunction with M6 multi-tooth screws and M6 nuts
Suitable for	Enclosure type: VX TS VX SE PC IW AX AX plastic AX wall-mounted housing, 3-part Suitable for width/depth: 500 mm Enclosure type: VX TS VX SE PC IW AX AX plastic AX wall-mounted housing, 3-part Suitable for width/depth: 19.7 "
Suitable for	VX base/plinth system, stainless steel
Packaging unit	20 pc(s).
Net weight	4.06
Gross weight	5.1
PCF per pack (cradle-to-gate)	19.2 kg CO2 eq (Cat B)

Features

Note on PCF category	Category B: PCF value (cradle-to-gate) based on the product weight, approximately calculated and self-declared
Customs tariff number	73269098
EAN	4028177103764
ETIM 9	EC002620
ETIM 8	EC002620
ECLASS 8.0	27189261