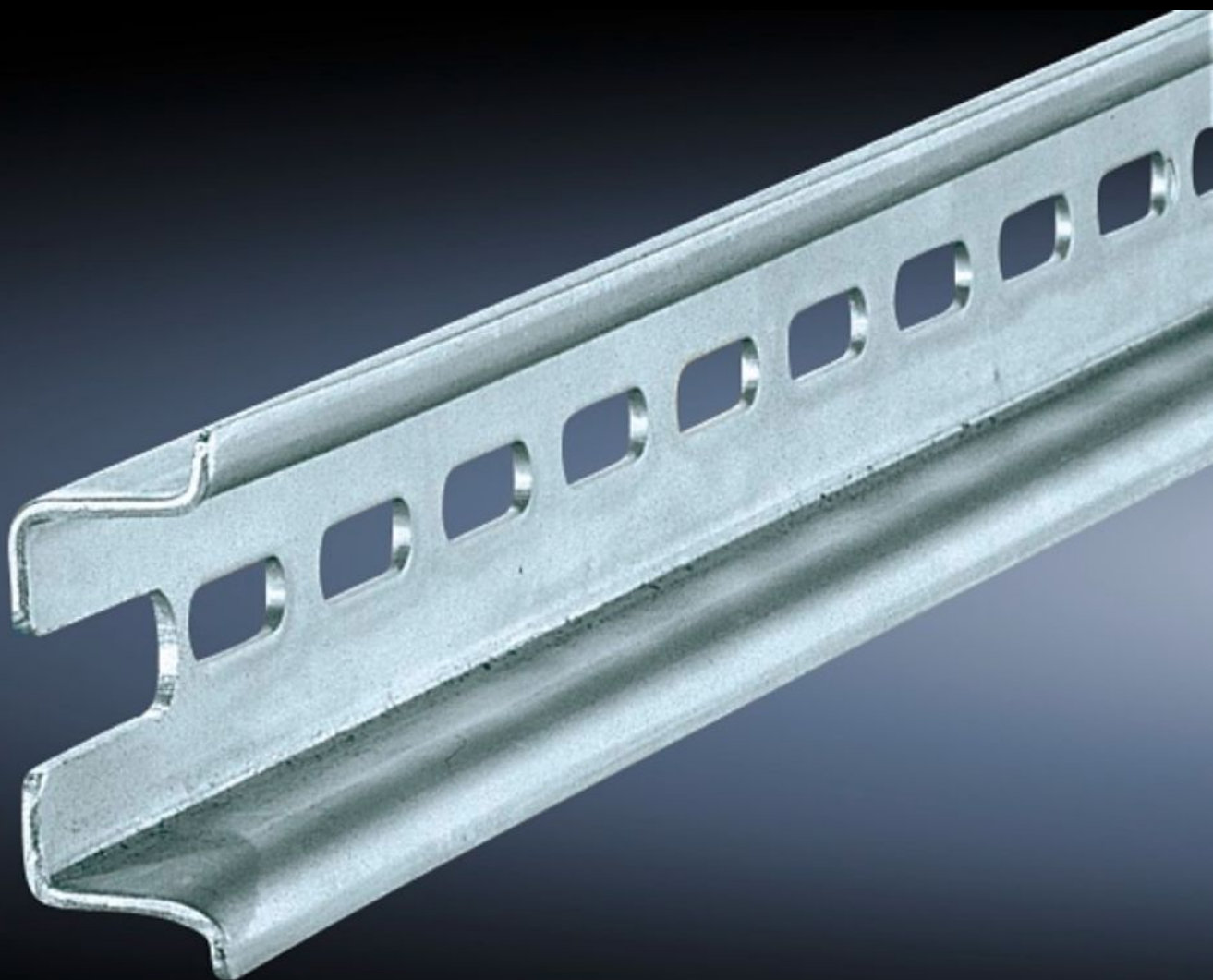


# Rittal – The System.

Faster – better – everywhere.



## SZ 4933.000

## Support rail TH 35/15

State: 6/12/2025 (Source: [rittal.com/us-en](https://www.rittal.com/us-en))

ENCLOSURES

POWER DISTRIBUTION

CLIMATE CONTROL

IT INFRASTRUCTURE

SOFTWARE & SERVICES

FRIEDHELM LOH GROUP



# SZ 4933.000 - Support rail TH 35/15 to EN 60 715 for VX, TS, VX SE

For snapping on terminals or other components using latching technology as per EN 60 715.

## Features

Model No.	SZ 4933.000
Product description	For snapping on terminals or other components using latching technology as per EN 60 715.
Material	Carbon steel
Surface finish	Zinc-plated
Length of support rail	455 mm
Suitable for	Enclosure type: VX TS Width: = 500 mm Depth: = 500 mm Enclosure type: VX TS Width: = 19.7 " Depth: = 19.7 "
Packaging unit	6 pc(s).
Net weight	1.602
Gross weight	1.69
PCF per pack (cradle-to-gate)	6.4 kg CO2 eq (Cat B)
Note on PCF category	Category B: PCF value (cradle-to-gate) based on the product weight, approximately calculated and self-declared
Customs tariff number	73269098
EAN	4028177114371
ETIM 9	EC001285
ETIM 8	EC001285

# Features

ECLASS 8.0

27400602