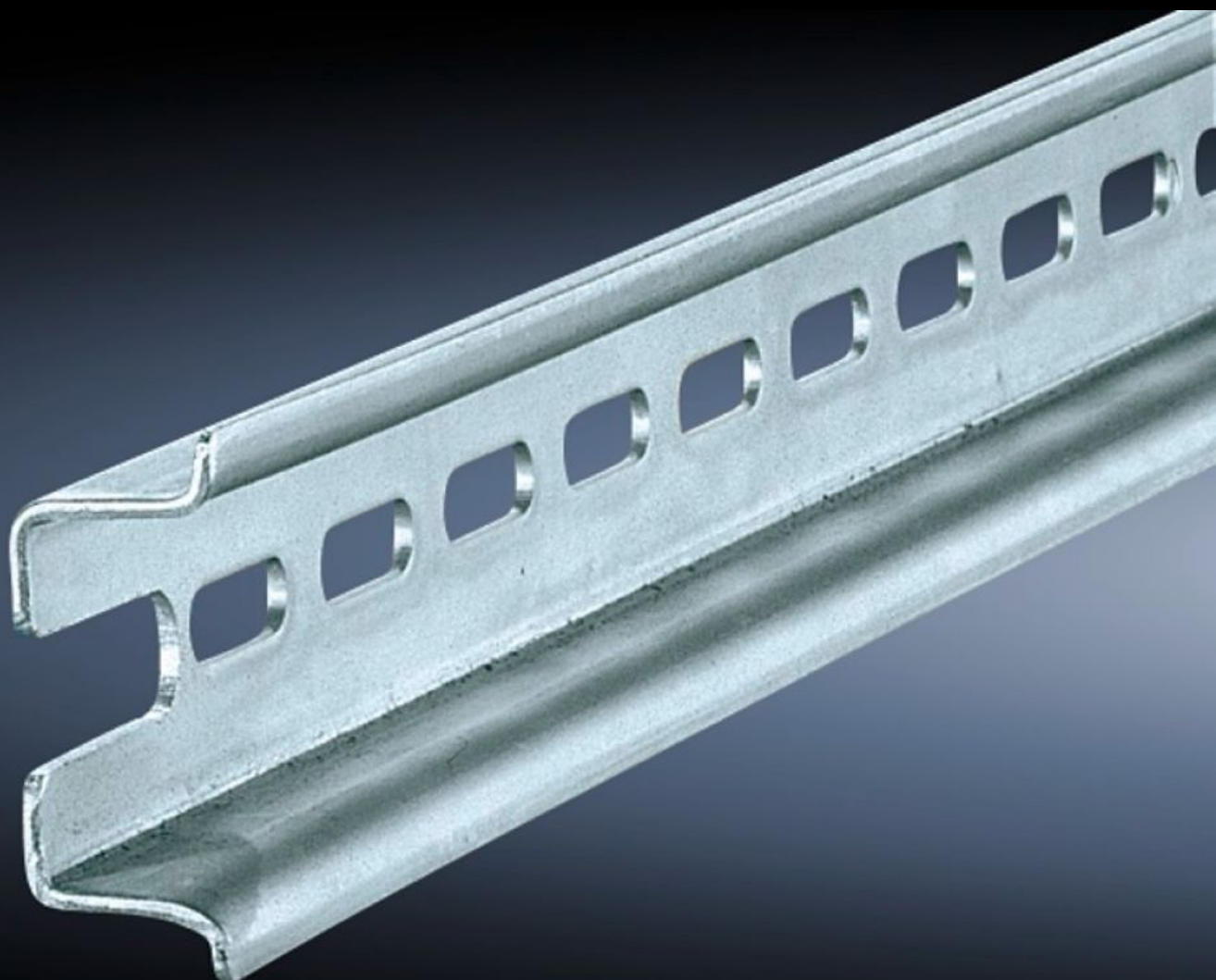


Rittal – The System.

Faster – better – everywhere.



SZ 4937.000

Support rail TH 35/15

State: 12/11/2025 (Source: rittal.com/us-en)

ENCLOSURES

POWER DISTRIBUTION

CLIMATE CONTROL

IT INFRASTRUCTURE

SOFTWARE & SERVICES

FRIEDHELM LOH GROUP



SZ 4937.000 - Support rail TH 35/15 to EN 60 715 for VX, TS, VX SE

For snapping on terminals or other components using latching technology as per EN 60 715.

Features

Model No.	SZ 4937.000
Product description	For snapping on terminals or other components using latching technology as per EN 60 715.
Material	Carbon steel
Surface finish	Zinc-plated
Length of support rail	1,155 mm
installation options AX Base	In base/plinth width 1,200 mm
Suitable for	Enclosure type: VX TS Width: = 1,200 mm Depth: = 1,200 mm Enclosure type: VX TS Width: = 47.2 ~ Depth: = 47.2 ~
Suitable for	AX base/plinth system
Packaging unit	6 pc(s).
Net weight	4.152
Gross weight	4.3
PCF/VE (cradle-to-gate)	16.5 kg CO2 eq (Cat B)
Information regarding the PCF class	Category B: PCF value (cradle-to-gate) calculated approximately on the basis of the product weight and self-declared
Customs tariff number	73269098
EAN	4028177114456

Features

ETIM 9	EC001285
ETIM 8	EC001285
ECLASS 8.0	27400602