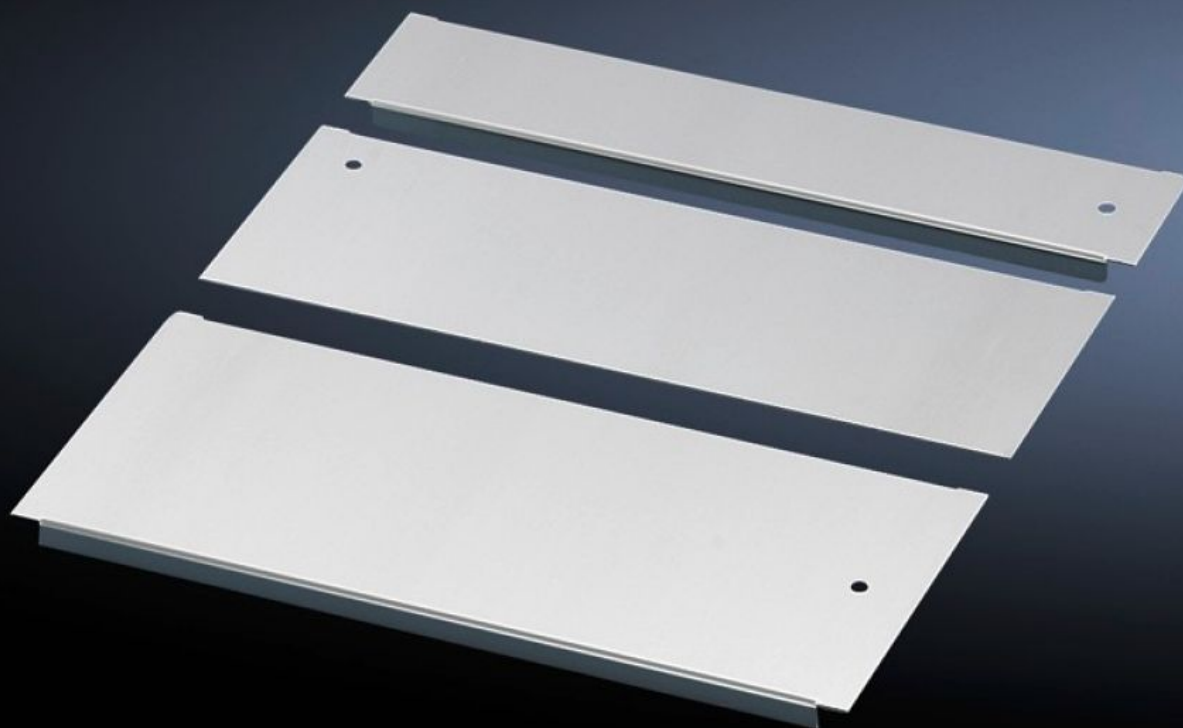


# Rittal – The System.

Faster – better – everywhere.



## CM 5001.239

### Gland plate

State: 12/24/2025 (Source: [rittal.com/us-en](https://www.rittal.com/us-en))

ENCLOSURES

POWER DISTRIBUTION

CLIMATE CONTROL

IT INFRASTRUCTURE

SOFTWARE & SERVICES

FRIEDHELM LOH GROUP



# CM 5001.239 - Gland plate for TP

Equipotential bonding is provided via fastening components and grounding points.

## Features

Model No.	CM 5001.239
Version	Sliding panel
Product description	Equipotential bonding is provided via assembly components and grounding points.
Material	Carbon steel
Surface finish	Zinc-plated
Supply includes	Assembly components
Note	For greater stability and universal cable entry, the base opening is divided in the width for 1000, 1200 and 1600 mm wide enclosures, and is suitable for various configurations. Several base plate modules need to be combined to close off the base completely in the TS-IT
Dimensions	Depth: 150 mm Depth: 5.91 "
Suitable for	Enclosure type: TS IT TS CM TP Width: = 600 mm Enclosure type: TS IT TS CM TP Width: = 23.6 "
Packaging unit	1 pc(s).
Net weight	0.9
Gross weight	0.96
Customs tariff number	72092690

# Features

EAN	4028177681231
E-Number Sweden	E7239581
ETIM 9	EC002620
ETIM 8	EC002620
ECLASS 8.0	27189261