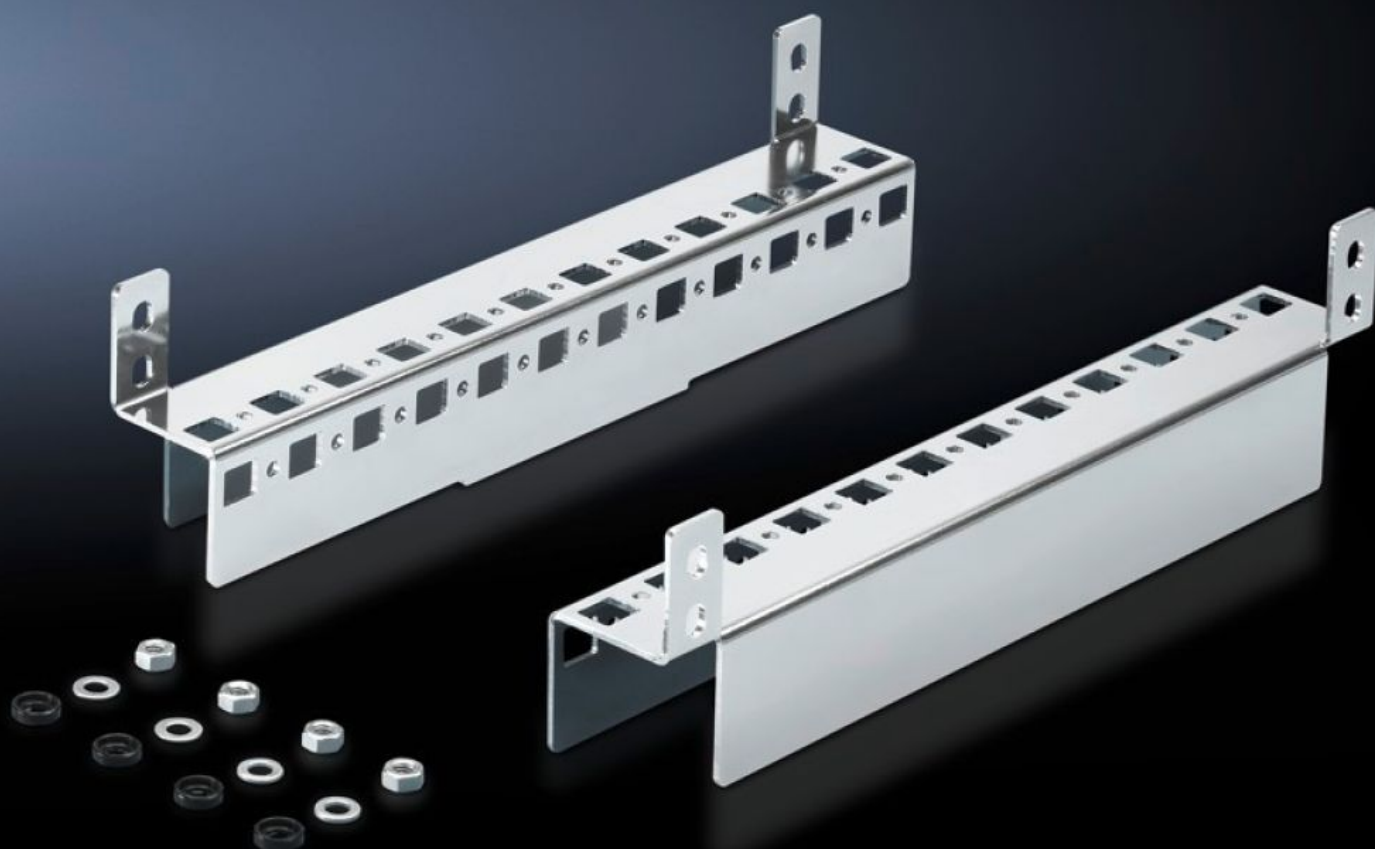


Rittal – The System.

Faster – better – everywhere.



CM 5001.370

Base configuration rail

State: 7/16/2025 (Source: [rittal.com/us-en](https://www.rittal.com/us-en))

ENCLOSURES

POWER DISTRIBUTION

CLIMATE CONTROL

IT INFRASTRUCTURE

SOFTWARE & SERVICES

FRIEDHELM LOH GROUP



CM 5001.370 - Base configuration rail for TP

Mounted in the housing depth on the available threaded bolts, no machining required. System punchings on two sides. Provides additional mounting options.



Features

Model No.	CM 5001.370
Product description	Mounted in the housing depth on the available threaded bolts, no machining required. System punchings on two sides. Provides additional mounting options.
Material	Carbon steel
Surface finish	Zinc-plated
Supply includes	Assembly components
Suitable for	Enclosure type: TP Depth: = 400 mm Enclosure type: TP Depth: = 15.7 "
Packaging unit	2 pc(s).
Net weight	1
Gross weight	1.075
PCF/VE (cradle-to-gate)	4.1 kg CO2 eq (Cat B)
Information regarding the PCF class	Category B: PCF value (cradle-to-gate) calculated approximately on the basis of the product weight and self-declared
Customs tariff number	73269098
EAN	4028177620599

Features

ETIM 9	EC002625
ETIM 8	EC002625
ECLASS 8.0	27189234