

# Rittal – The System.

Faster – better – everywhere.



## TS 5050.133 Rear panel

State: 6/19/2026 (Source: [rittal.com/us-en](http://rittal.com/us-en))

ENCLOSURES

POWER DISTRIBUTION

CLIMATE CONTROL

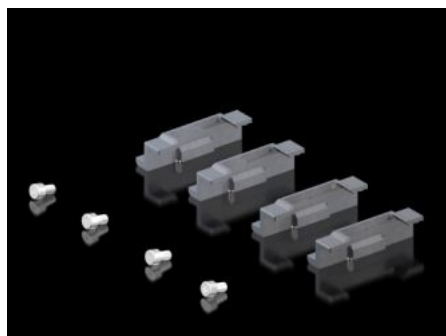
IT INFRASTRUCTURE

SOFTWARE & SERVICES

FRIEDHELM LOH GROUP



# TS 5050.133 - Rear panel for VX SE, TS



## Features

|                       |  |
|-----------------------|--|
| Model No.             | TS 5050.133  |
| Surface finish        | Powder-coated  |
| Color                 | RAL 7035   |
| Supply includes       | Rear panel<br>Assembly components (set)                              |
| Dimensions            | Width: 1,200 mm<br>Height: 1,600 mm<br>Width: 47.2 "<br>Height: 63 " |
| Supply includes       | Rear panel<br>Assembly components (set)                              |
| Packaging unit        | 1 pc(s).   |
| Net weight            | 25 kg  |
| Gross weight          | 35 kg  |
| Customs tariff number | 94039910   |
| ETIM 9                | EC002524   |
| ETIM 8                | EC002524   |
| ECLASS 8.0            | 27182101   |