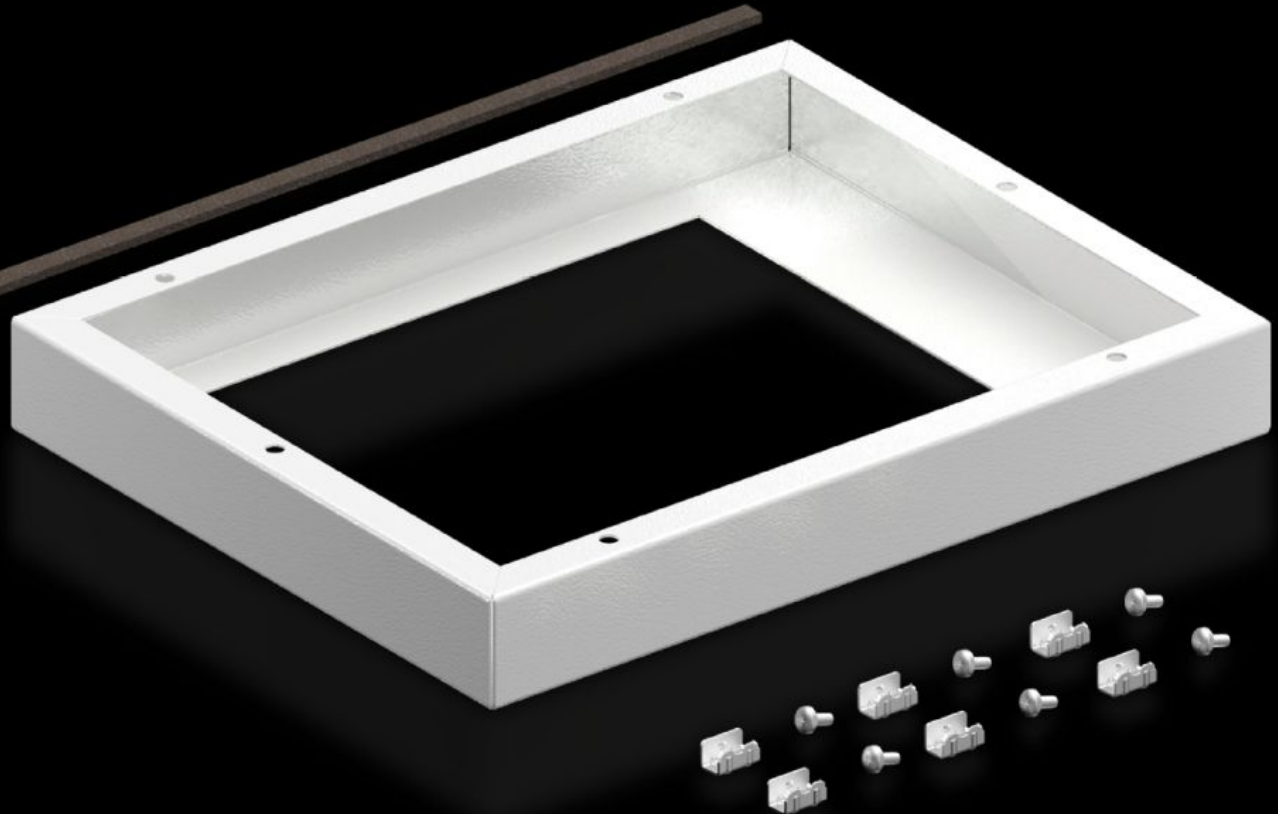


Rittal – The System.

Faster – better – everywhere.



SK 5050.701

Adapter frame for roof-mounted fan

State: 5/22/2026 (Source: rittal.com/us-en)

ENCLOSURES

POWER DISTRIBUTION

CLIMATE CONTROL

IT INFRASTRUCTURE

SOFTWARE & SERVICES

FRIEDHELM LOH GROUP



SK 5050.701 - Adapter frame for roof-mounted fan

For mounting new generation roof ventilators on roof plates with existing cutout. With cutout W x D 258 x 258 mm.

Features

Model No.	SK 5050.701
Supply includes	Fasteners
Mounting cut-out	Width:258 mm Depth:258 mm Width:10.2 " Depth:10.2 "
Dimensions	Width: 515 mm Height: 50 mm Depth: 300 mm Width: 20.3 " Height: 1.97 " Depth: 11.8 "
Packaging unit	1 pc(s).
Net weight	2.76 kg
Gross weight	2.96 kg
Customs tariff number	84145915
ETIM 9	EC000320
ECLASS 8.0	29170101
Product description	SK Adaptor for roof mounted fan, , WxD 515x300mm, cutout WxD 258x258mm, for old cutout: WxD 475x260mm, for old roof mounted fan: 3149410, 3149420, 3149440,