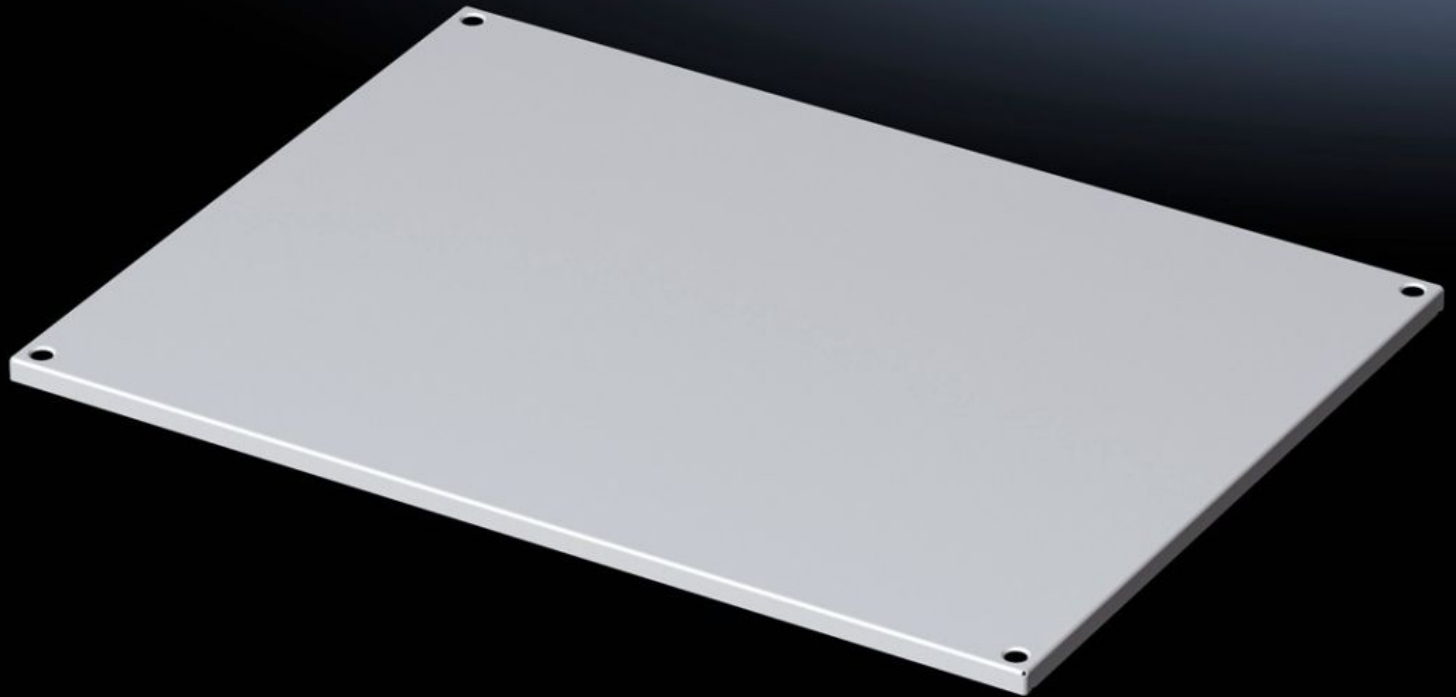
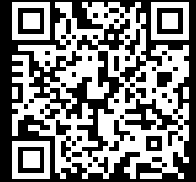


Rittal – The System.

Faster – better – everywhere.



VX 5051.060

Roof plate

State: 5/14/2026 (Source: rittal.com/us-en)

ENCLOSURES

POWER DISTRIBUTION

CLIMATE CONTROL

IT INFRASTRUCTURE

SOFTWARE & SERVICES

FRIEDHELM LOH GROUP



VX 5051.060 - Roof plate for VX

Features

Model No.	VX 5051.060
Material	Carbon steel
Surface finish	dipcoat-primed, powder-coated on the outside, textured paint
Color	RAL 7035
Suitable for	Enclosure type: VX Width: 800 mm Depth: 500 mm Enclosure type: VX Width: 31.5 " Depth: 19.7 "
Packaging unit	1 pc(s).
Net weight	4.6 kg
Gross weight	6.6 kg
Customs tariff number	73269098
ETIM 9	EC000744
ETIM 8	EC000261
ECLASS 8.0	27182405