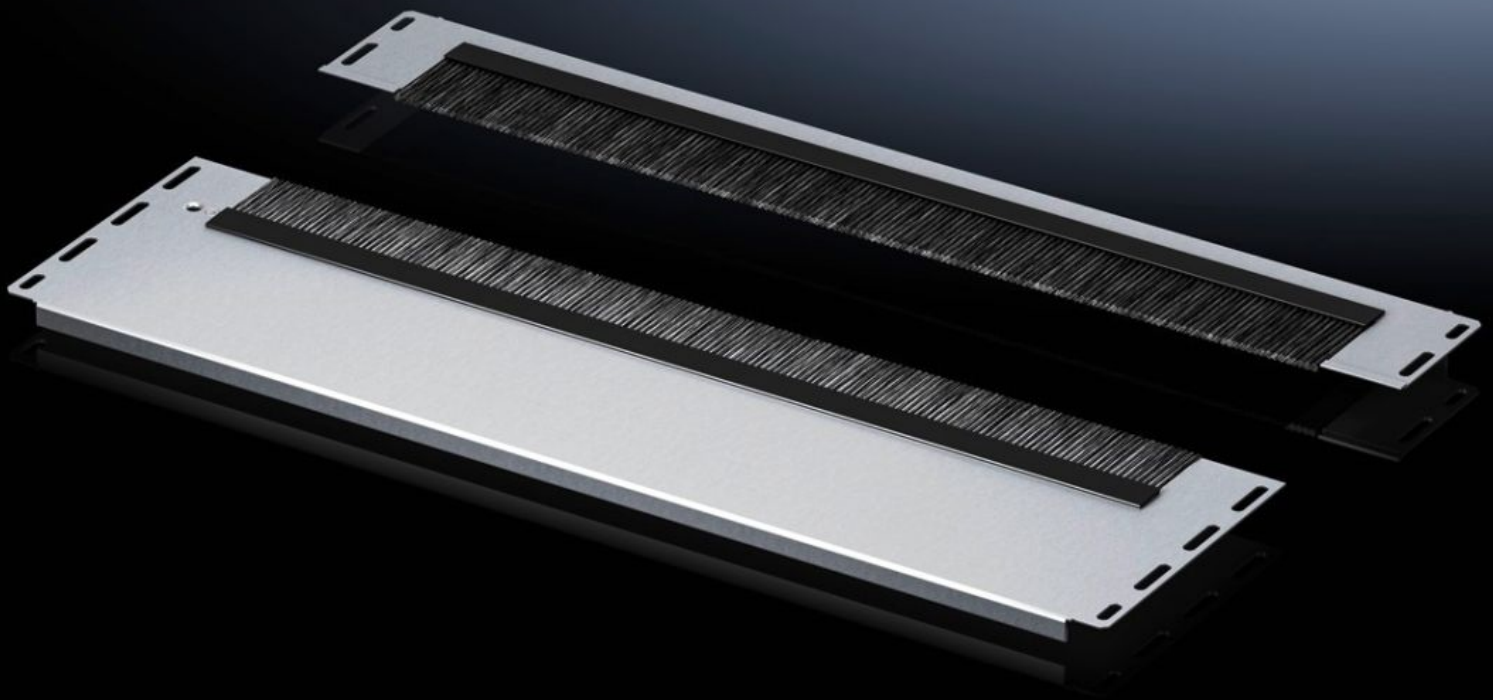


**Rittal – The System.**

Faster – better – everywhere.



**VX 5301.335**

**Base plate module, multi-piece, with  
brush strip, super-airtight**

State: 6/16/2026 (Source: [rittal.com/us-en](http://rittal.com/us-en))

ENCLOSURES

POWER DISTRIBUTION

CLIMATE CONTROL

IT INFRASTRUCTURE

SOFTWARE & SERVICES

FRIEDHELM LOH GROUP



# VX 5301.335 - Base plate module, multi-piece, with brush strip, super-airtight for VX IT

For targeted cable entry from below.



## Features

Model No.	VX 5301.335
Version	Two-piece, with brush strip
Product description	For targeted cable entry from below. Special brush strips with alternate offset brushes provide a better seal from the environment if cable entry is carried out effectively, therefore assisting climate control. The two-piece design even allows retrospective fitting of the base module with the cables already installed.
Material	Module plate: Carbon steel Brush strip: Plastic, UL 94-HB, halogen-free Two-piece, with brush strip
Surface finish	Module plate: Zinc-plated
Supply includes	2 module panel halves including brush strips, super-airtight Assembly components
Mounting tip	Several base plate modules need to be combined to seal the base completely in the VX-IT The base plate module can be combined as an alternative to other base modules with a depth of 237.5 mm.
Note	Base plate modules with brush strip not suitable for applications with protection category to IEC 60 529
Dimensions	Depth: 237.5 mm Depth: 9.35 "

# Features

Suitable for	Enclosure type: VX IT Width: = 800 mm Enclosure type: VX IT Width: = 31.5 "
Packaging unit	1 pc(s).
Net weight	2 kg
Gross weight	2.14 kg
PCF/VE (cradle-to-gate)	8.2 kg CO2 eq (Cat B)
Information regarding the PCF class	Category B: PCF value (cradle-to-gate) calculated approximately on the basis of the product weight and self-declared
Customs tariff number	94039910
ETIM 9	EC002620
ECLASS 8.0	27189261
Product description	VX IT gland plate module with brush strip, for width 800 mm, W x D 600 x 237.5 mm, two-piece, sheet steel