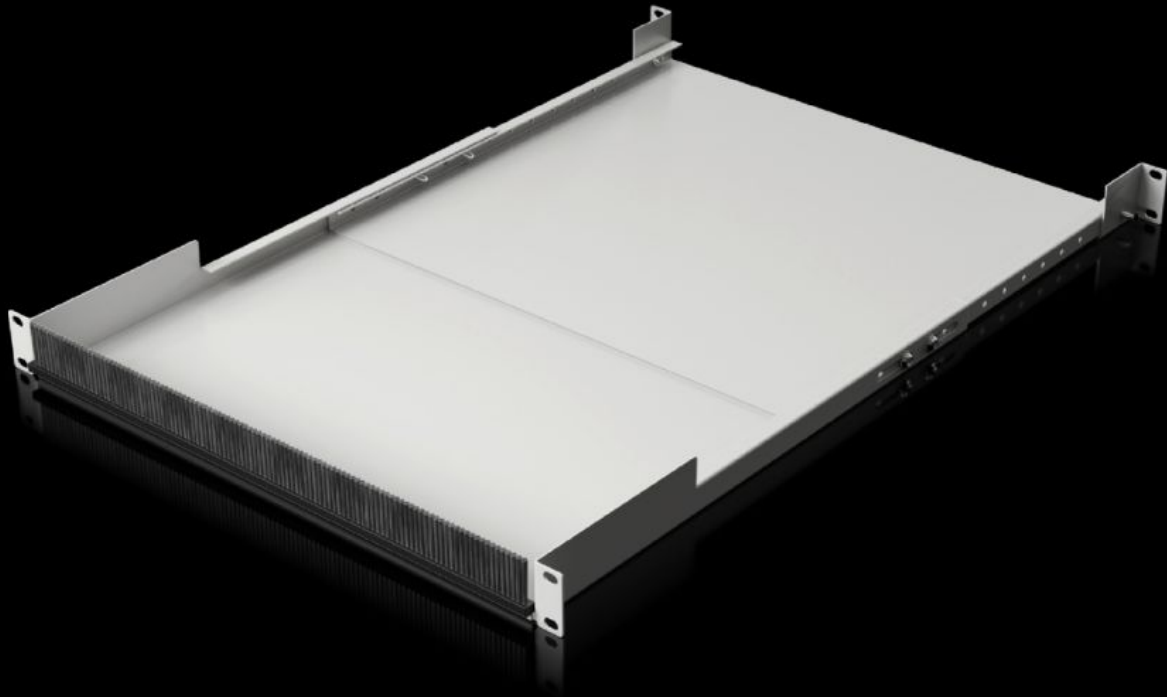


Rittal – The System.

Faster – better – everywhere.



IT 5302.042

19" cable bridge, variable depth

State: 5/11/2026 (Source: rittal.com/us-en)

ENCLOSURES

POWER DISTRIBUTION

CLIMATE CONTROL

IT INFRASTRUCTURE

SOFTWARE & SERVICES

FRIEDHELM LOH GROUP



IT 5302.042 - 19" cable bridge, variable depth

Within the 19" assembly level, the cable bridge offers an integrated option for cable entry, between the front and rear assembly level within a cabinet.

Features

Model No.	IT 5302.042
Product description	A user-friendly way of creating integrated cable routing between the front and rear 19" mounting levels within the enclosure.
Benefits	<p>Cable entry on the front via brush strip to the thermal partitioning of the cable entry area</p> <p>Direct cable routing between patch level and component for rear-side expansion, optimal cable routing for rear-side switch assembly</p> <p>Fully depth-variable with versatile, infinitely adjustable extension of the cable link</p> <p>Prevents incorrect airflow by partitioning the transition</p> <p>Open at the top for easy retrofitting, even with cables already inserted</p> <p>Cable bridge can be expanded upward by 1 U, thanks to the use of another cable feedthrough panel with brush strip</p>
Material	<p>Carbon steel</p> <p>Brush strip: Plastic, UL 94-V0</p>
Surface finish	Spray-finished
Color	RAL 9005
Supply includes	<p>Cable bridge</p> <p>Brush strip</p>
Installation options	For attaching between the front and rear 19" mounting level
Distance between levels	<p>500 - 750 mm</p> <p>19.7 - 29.5 "</p>
Height units	1 U
Load capacity, static	150 N
Suitable for	for enclosure-independent mounting
Note	Order fastening material separately

Features

Packaging unit	1 pc(s).
Net weight	6.8 kg
Gross weight	7.239 kg
PCF/VE (cradle-to-gate)	PCF-Wert 18,78 kg Co ² e
Customs tariff number	73269098
Product description	19" cable bridge, variable depth, 500-750 mm, RAL 9005
