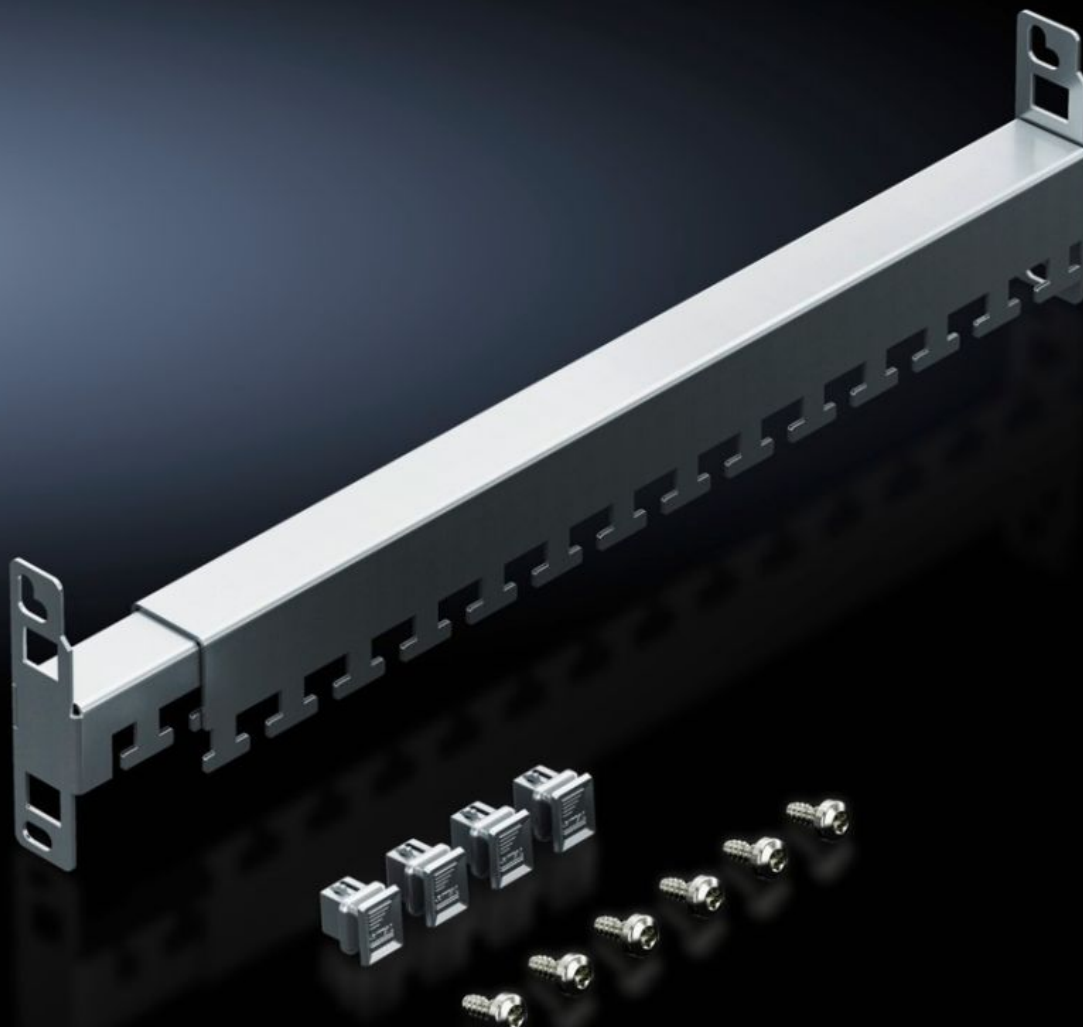


Rittal – The System.

Faster – better – everywhere.



DK 5302.044

Cable Clamp Rail, Depth-Variable

State: 7/19/2025 (Source: [rittal.com/us-en](https://www.rittal.com/us-en))

ENCLOSURES

POWER DISTRIBUTION

CLIMATE CONTROL

IT INFRASTRUCTURE

SOFTWARE & SERVICES

FRIEDHELM LOH GROUP



DK 5302.044 - Cable Clamp Rail, Depth-Variable for VX IT, TE

For VX IT and TE. Facilitates flexible adaptation of their length to the existing mounting distance between the two 19" mounting levels.

Features

Model No.	DK 5302.044
Benefits	The depth variability of the rails allows their length to be flexibly adapted to the given mounting distance between the two 19" mounting levels.
Applications	<p>For cable routing on the enclosure frame and for strain relief of the routed cables. The cables can be attached to the cable clamp rails with cable ties or Velcro fasteners.</p> <p>The cable clamp rails can be located horizontally at the rear directly onto a 19" mounting level or in the enclosure depth between two mounting levels. An additional screw fastening secures the unit.</p>
Material	Carbon steel
Surface finish	Zinc-plated
Supply includes	Mounting accessories
Distance between levels	350 - 550 mm 13.8 - 21.7 "
Note	<p>Mounting dimension + 170 mm = 19" level spacing for VX IT standard</p> <p>Mounting dimension + 175 mm = 19" level spacing for VX IT dynamic</p>
Packaging unit	1 pc(s).
Net weight	0.67
Gross weight	0.687
PCF/VE (cradle-to-gate)	2.6 kg CO2 eq (Cat B)
Information regarding the PCF class	Category B: PCF value (cradle-to-gate) calculated approximately on the basis of the product weight and self-declared

Features

Customs tariff number	73269098
EAN	4028177952690
ETIM 9	EC000322
ECLASS 8.0	27400604