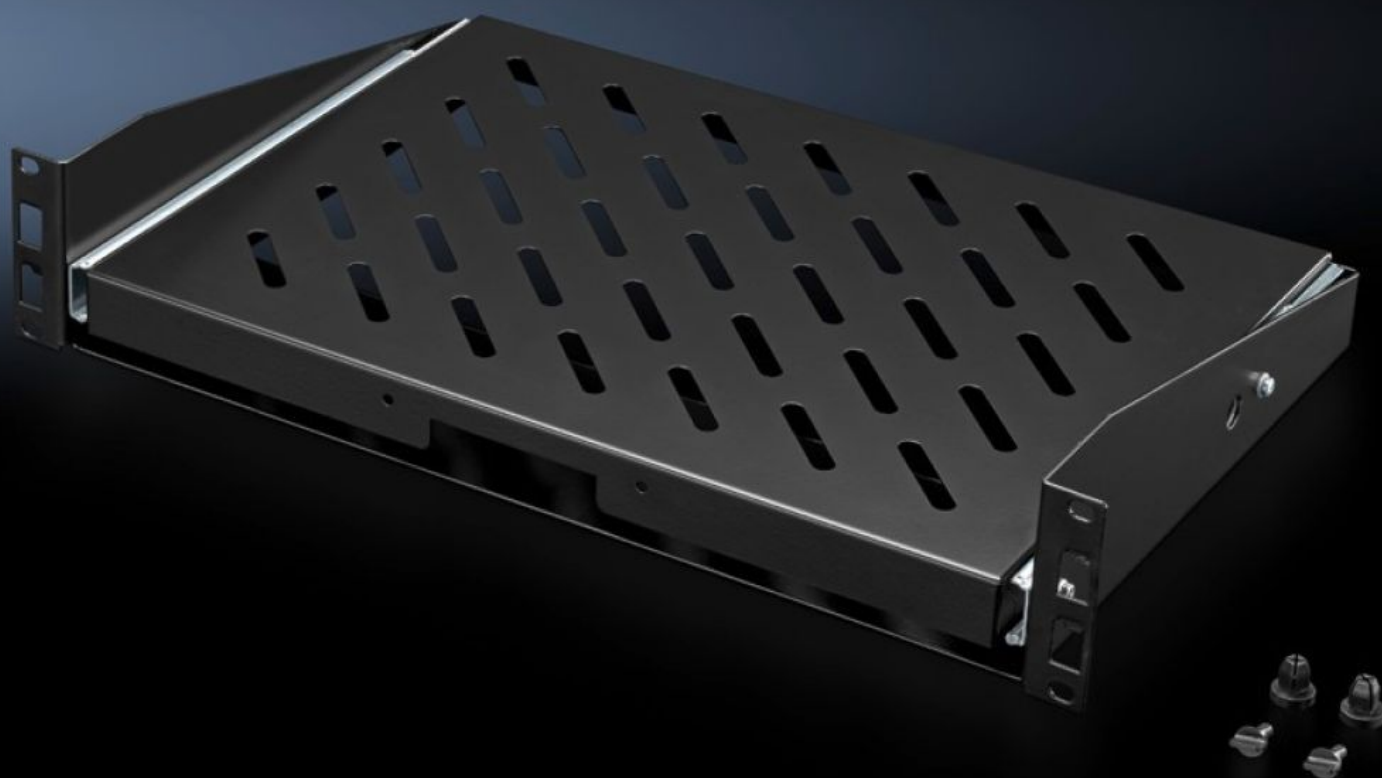


Rittal – The System.

Faster – better – everywhere.



DK 5501.635

Component Shelf, Pull-Out, 2 U

State: 12/17/2025 (Source: rittal.com/us-en)

ENCLOSURES

POWER DISTRIBUTION

CLIMATE CONTROL

IT INFRASTRUCTURE

SOFTWARE & SERVICES

FRIEDHELM LOH GROUP



DK 5501.635 - Component Shelf, Pull-Out, 2 U for a 482.6 mm (19") mounting level

This complete kit contains the pre-configured variant that includes telescopic slides, recessed grip, flange and locking pins.



Features

Model No.	DK 5501.635
Product description	For the simple, front installation of wall-mounted or floor-standing housings with at least one 19" mounting level. This complete kit contains the pre-configured variant that includes telescopic slides, recessed grip, flange and locking pins.
Benefits	Simple, tool-free assembly Full withdrawal Self-locking
Material	Carbon steel
Surface finish	Spray-finished
Color	RAL 9005
Supply includes	Component shelves, preassembled Assembly components
Load capacity static	250 N 56.202 lbf.
Contact surface	Width: 430 mm Depth: 300 mm Width: 16.9 " Depth: 11.8 "

Features

Packaging unit	1 pc(s).
Net weight	3
Gross weight	3.74
Customs tariff number	73269098
EAN	4028177679078
ETIM 9	EC002620
ECLASS 8.0	27189261