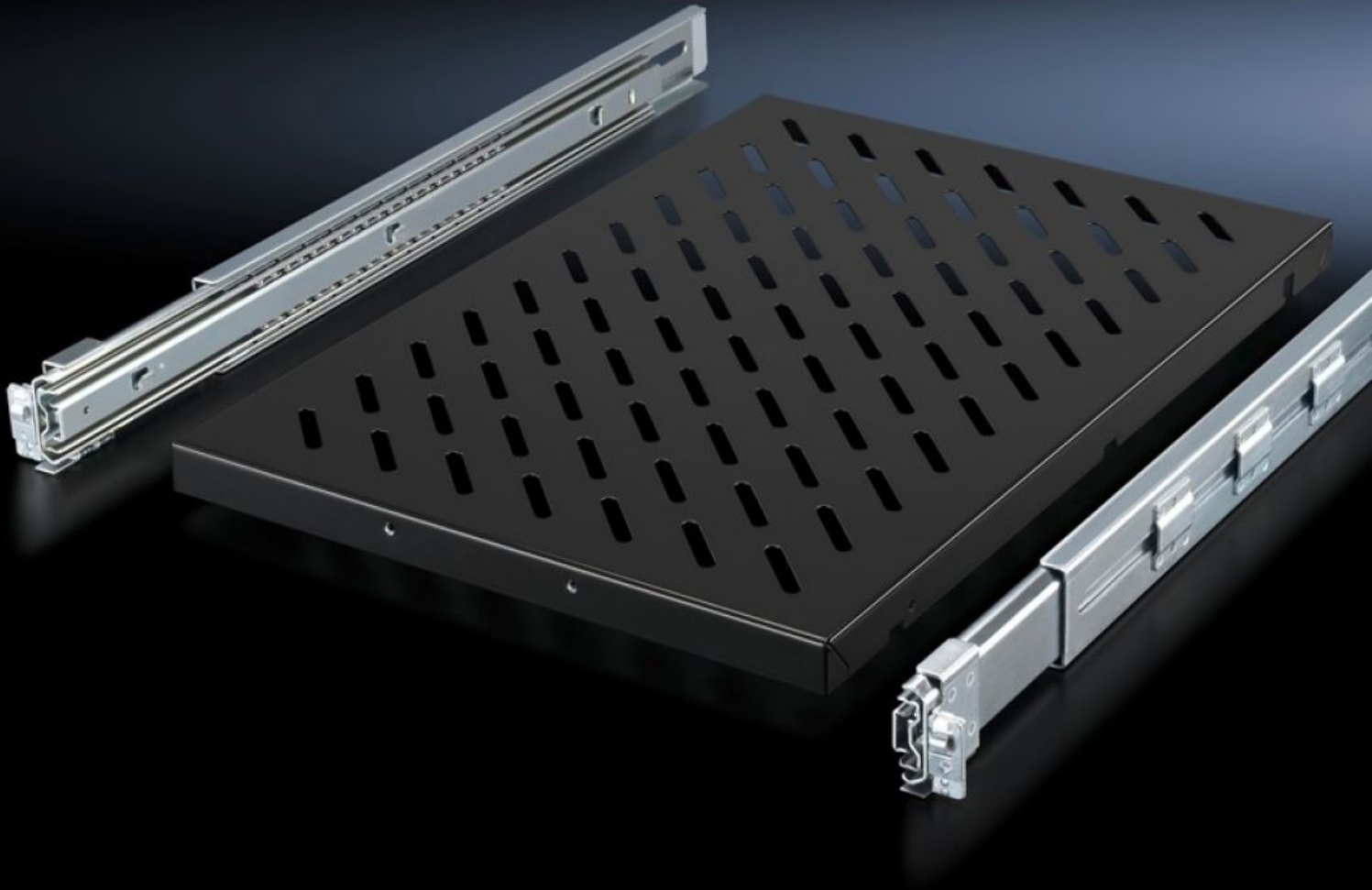


**Rittal – The System.**

Faster – better – everywhere.



# DK 5501.685

## Component shelf, pull-out

State: 4/24/2026 (Source: [rittal.com/us-en](http://rittal.com/us-en))

ENCLOSURES

POWER DISTRIBUTION

CLIMATE CONTROL

IT INFRASTRUCTURE

SOFTWARE & SERVICES

FRIEDHELM LOH GROUP



# DK 5501.685 - Component shelf, pull-out for VX IT, TS IT, TE, TX CableNet

Mounted between two 19" mounting levels.



## Features

Model No.	DK 5501.685
Product description	For mounting to 19" profile rails or 19" mounting frames between two 19" mounting levels.
Benefits	Tool-free, time-saving one-person assembly from the front of the enclosure Self-locking Full withdrawal
Applications	Depth-variable to adapt to individual distances between levels
Material	Carbon steel
Surface finish	Base: Spray-finished Telescopic slides/installation kit: zinc-plated
Color	RAL 9005
Supply includes	Component shelf, slotted Telescopic slide with mounting kit Assembly components
Load capacity	50 kg
Dimensions	Width: 419 mm Depth: 700 mm Width: 16.5 " Depth: 27.6 "

# Features

Suitable for	Enclosure type: VX IT TS IT TE TX CableNet
Distance between levels	600 - 900 mm 23.6 - 35.4 "
Packaging unit	1 pc(s).
Net weight	7.953 kg
Gross weight	8.52 kg
PCF/VE (cradle-to-gate)	32.4 kg CO2 eq (Cat B)
Information regarding the PCF class	Category B: PCF value (cradle-to-gate) calculated approximately on the basis of the product weight and self-declared
Customs tariff number	73269098
ETIM 9	EC002620
ECLASS 8.0	27189261
Product description	DK Component shelf, WHD: 419x1 Ux700 mm, 50 kg, distance between levels: 600-900 mm, Pull-out, RAL 9005