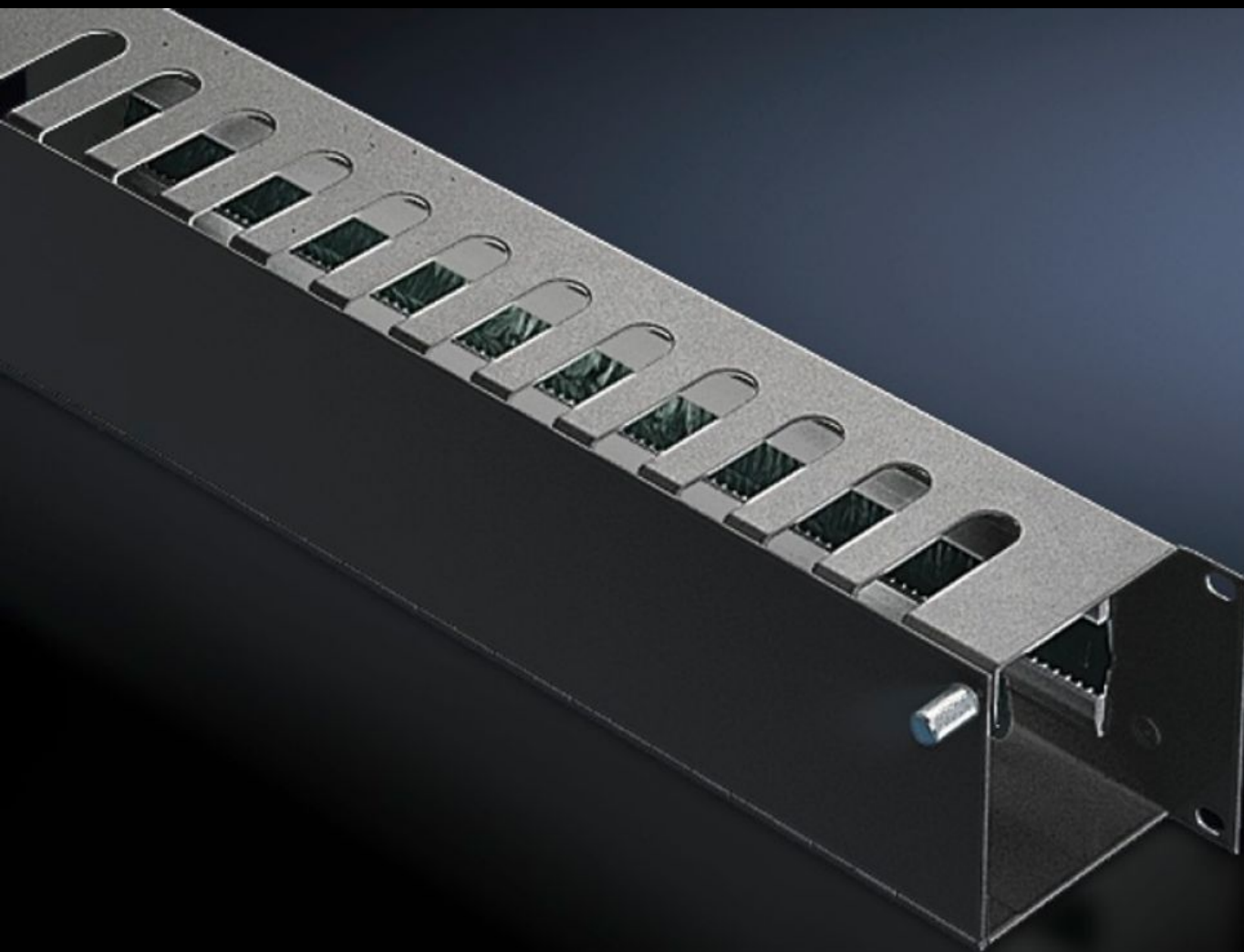
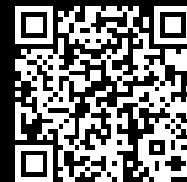


Rittal – The System.

Faster – better – everywhere.



DK 5502.235

Cable management panel

State: 12/14/2025 (Source: rittal.com/us-en)

ENCLOSURES

POWER DISTRIBUTION

CLIMATE CONTROL

IT INFRASTRUCTURE

SOFTWARE & SERVICES

FRIEDHELM LOH GROUP



DK 5502.235 - Cable management panel with front flap

Cable routing compartment with cut-outs at the top, with flap and quick-release fasteners at the front for easy access, cables are fed in from the rear through the cut-out with brush strips.

Features

Model No.	DK 5502.235
Product description	The cable routing compartment is provided with cut-outs at the top, and the patch cables can be inserted here. The cable management panel is fitted with a flap and quick-release fasteners at the front, for optimum cable access. Cables can be fed in from the rear through the cut-out with brush strips.
Material	Carbon steel
Surface finish	Spray-finished
Depth of bars	100 mm 3.94 "
Dimensions	Width: 482.6 mm Width: 19 "
Height units	2 U
Packaging unit	1 pc(s).
Net weight	1.56
Gross weight	1.76
PCF/VE (cradle-to-gate)	6.7 kg CO2 eq (Cat B)
Information regarding the PCF class	Category B: PCF value (cradle-to-gate) calculated approximately on the basis of the product weight and self-declared
Customs tariff number	94039910
EAN	4028177679344
E-Number Sweden	E7239789
ETIM 9	EC000322
ECLASS 8.0	27400604