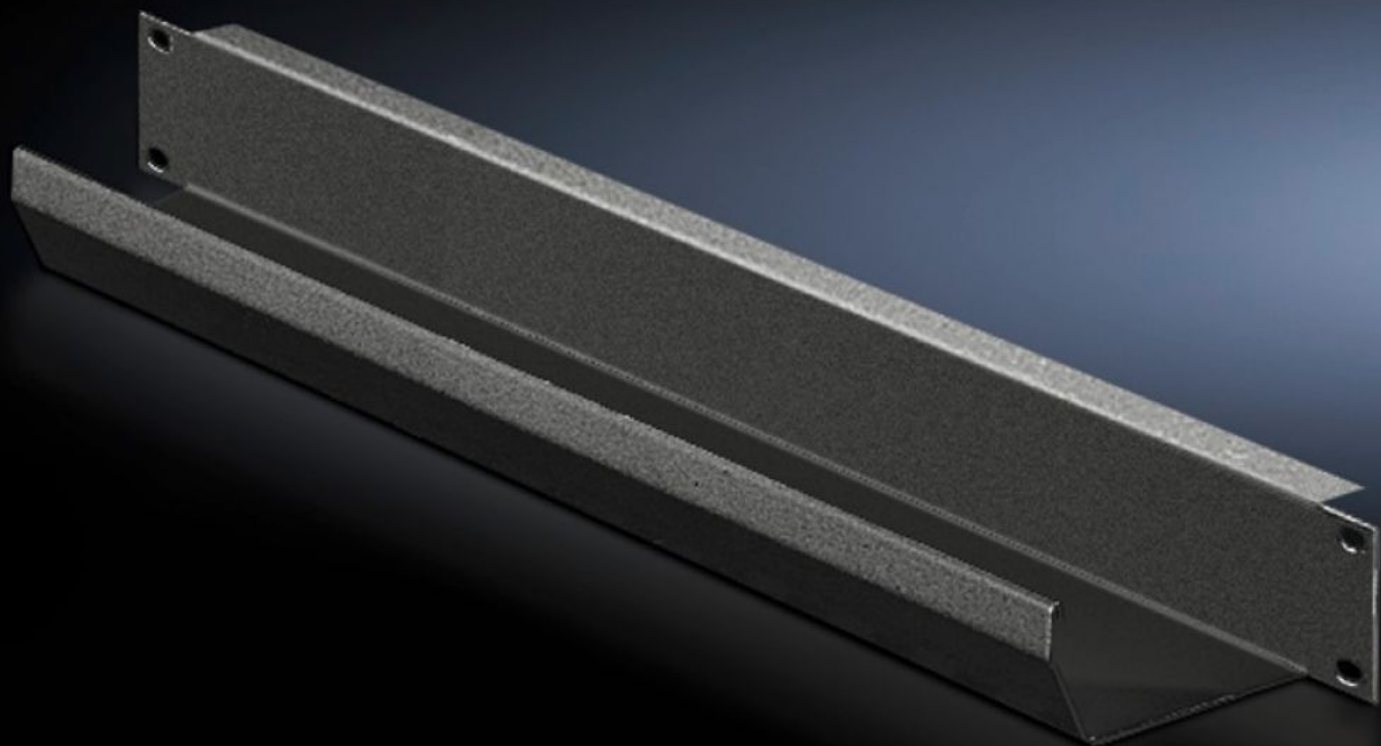


Rittal – The System.

Faster – better – everywhere.



DK 5502.245

Cable routing channel

State: 12/8/2025 (Source: [rittal.com/us-en](https://www.rittal.com/us-en))

ENCLOSURES

POWER DISTRIBUTION

CLIMATE CONTROL

IT INFRASTRUCTURE

SOFTWARE & SERVICES

FRIEDHELM LOH GROUP



DK 5502.245 - Cable routing channel 482.6 mm (19")

To hold patching cables.

Features

Model No.	DK 5502.245
Product description	To hold patch cables.
Material	Carbon steel
Surface finish	Spray-finished
Color	RAL 9005
Dimensions	Width: 482.6 mm Depth: 85 mm Width: 19 " Depth: 3.35 "
Height units	1 U
Packaging unit	1 pc(s).
Net weight	0.9
Gross weight	1.033
PCF/VE (cradle-to-gate)	3.9 kg CO2 eq (Cat B)
Information regarding the PCF class	Category B: PCF value (cradle-to-gate) calculated approximately on the basis of the product weight and self-declared
Customs tariff number	83024200
EAN	4028177679351
E-Number Sweden	E7239791
ETIM 9	EC000322
ECLASS 8.0	27400604