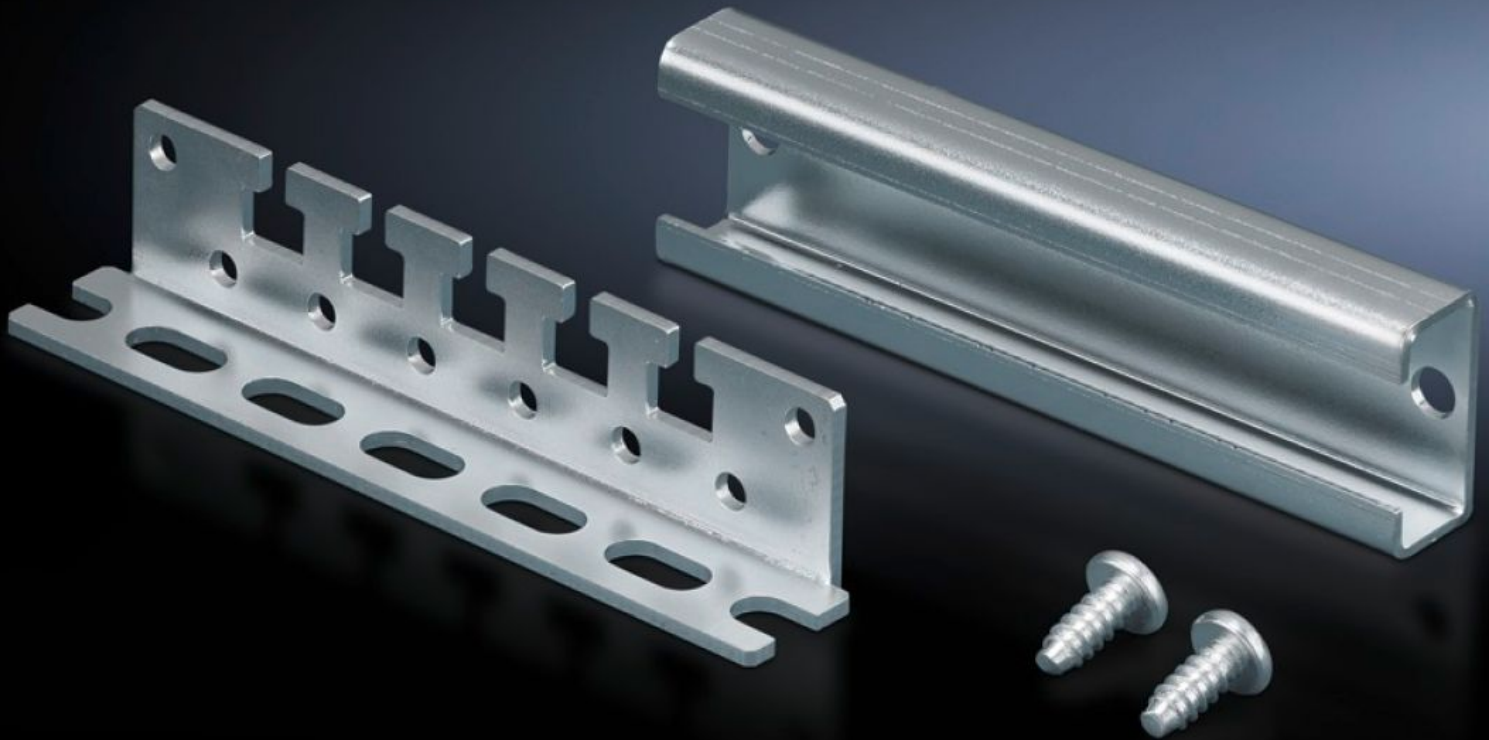


Rittal – The System.

Faster – better – everywhere.



CP 6052.000

Cable clamping bracket

State: 4/15/2026 (Source: rittal.com/us-en)

ENCLOSURES

POWER DISTRIBUTION

CLIMATE CONTROL

IT INFRASTRUCTURE

SOFTWARE & SERVICES

FRIEDHELM LOH GROUP



CP 6052.000 - Cable clamping bracket

For installation in command panel with support arm connection Ø 130 mm or 120 x 65 mm, cable clamping optionally using cable ties or cable clamps.



Features

Model No.	CP 6052.000
Product description	Cable clamping is optional by using cable clamps, 2597.000 cable ties or commercially available cable ties.
Applications	For installation in command panel with 120 x 65 mm or 130 mm dia. mounting cut-out
Material	Carbon steel
Surface finish	Zinc-plated
Supply includes	Incl. C rail and mounting screws.
Note	Bracket height = 25 mm with fitted C rail 40 mm.
Packaging unit	1 pc(s).
Net weight	0.146 kg
Gross weight	0.156 kg
PCF/VE (cradle-to-gate)	0.6 kg CO2 eq (Cat B)
Information regarding the PCF class	Category B: PCF value (cradle-to-gate) calculated approximately on the basis of the product weight and self-declared
Customs tariff number	73182900
ETIM 9	EC000322
ECLASS 8.0	27400604

Features

Product description

CP Cable clamping bracket, for command panel, with support arm connection Ø130 mm or 120x65 mm