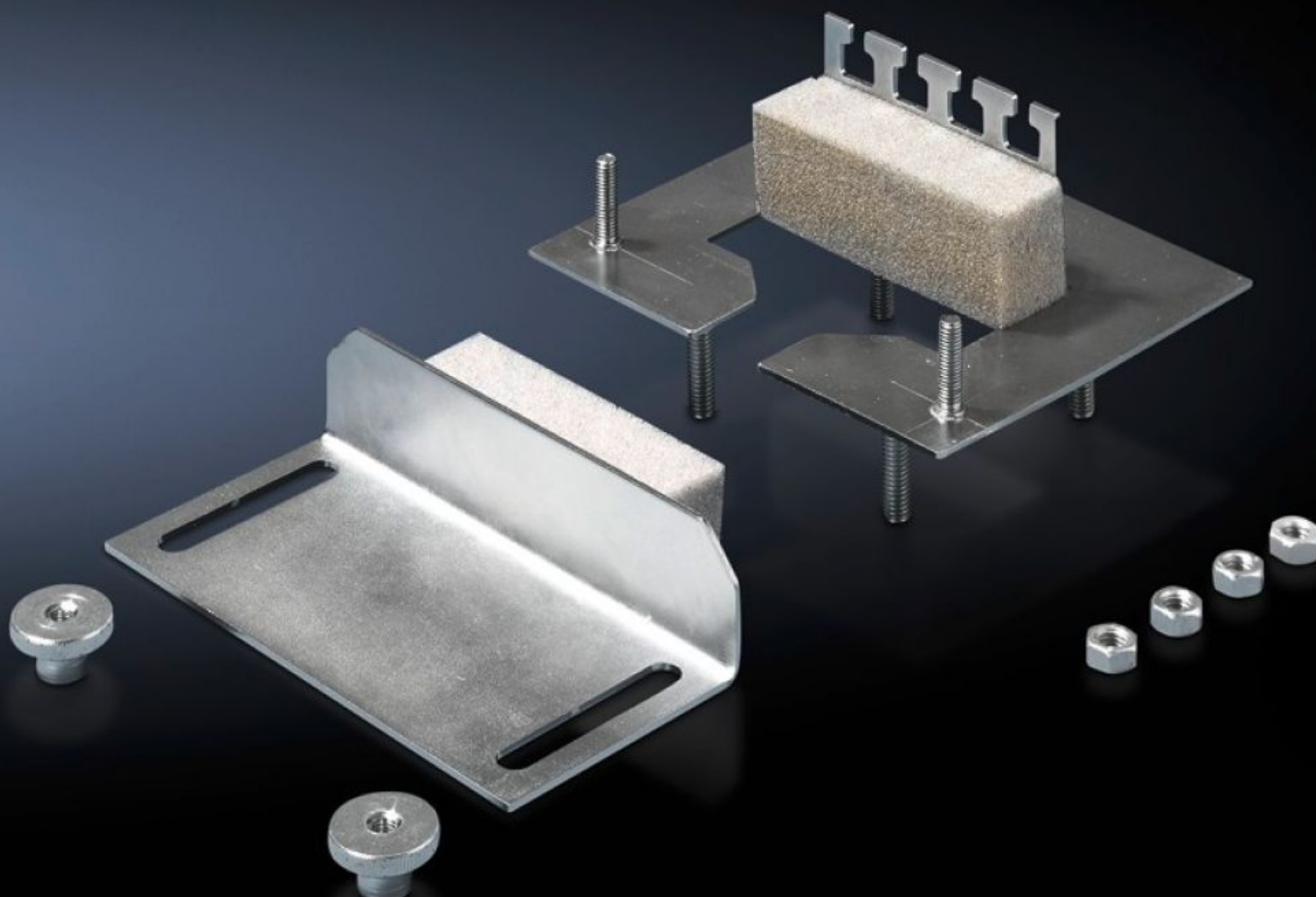


Rittal – The System.

Faster – better – everywhere.



CP 6052.500 Cable gland module

State: 2/11/2026 (Source: [rittal.com/us-en](https://www.rittal.com/us-en))

ENCLOSURES

POWER DISTRIBUTION

CLIMATE CONTROL

IT INFRASTRUCTURE

SOFTWARE & SERVICES

FRIEDHELM LOH GROUP



CP 6052.500 - Cable gland module for support arm connection Ø 130 mm

Use of the mounting cut-out for the Ø 130 mm support arm connection, round, with housings mounted on the wall, for sealed cable entry. May also be mounted at a later date with the cables already inserted. Equipped with T-heads for cable clamping. Particularly well-suited to cables with identical cross-sections.



Features

Model No.	CP 6052.500
Product description	Use of the mounting cut-out for the Ø 130 mm support arm connection, round, with housings mounted on the wall, for sealed cable entry. May also be mounted at a later date with the cables already inserted. Equipped with T-heads for cable clamping. Particularly well-suited to cables with identical cross-sections.
Benefits	May also be mounted with the cables already inserted. Particularly well-suited to cables with identical cross-sections with T-heads for cable clamping
Material	Carbon steel
Surface finish	Zinc-plated
Supply includes	Assembly components
Protection category IP to IEC 60529	IP 55 with correct installation and cable entry
Packaging unit	1 pc(s).
Net weight	0.32
Gross weight	0.341

Features

PCF/VE (cradle-to-gate)	1.3 kg CO2 eq (Cat B)
Information regarding the PCF class	Category B: PCF value (cradle-to-gate) calculated approximately on the basis of the product weight and self-declared
Customs tariff number	73269098
EAN	4028177305786
ETIM 9	EC000879
ECLASS 8.0	27069216