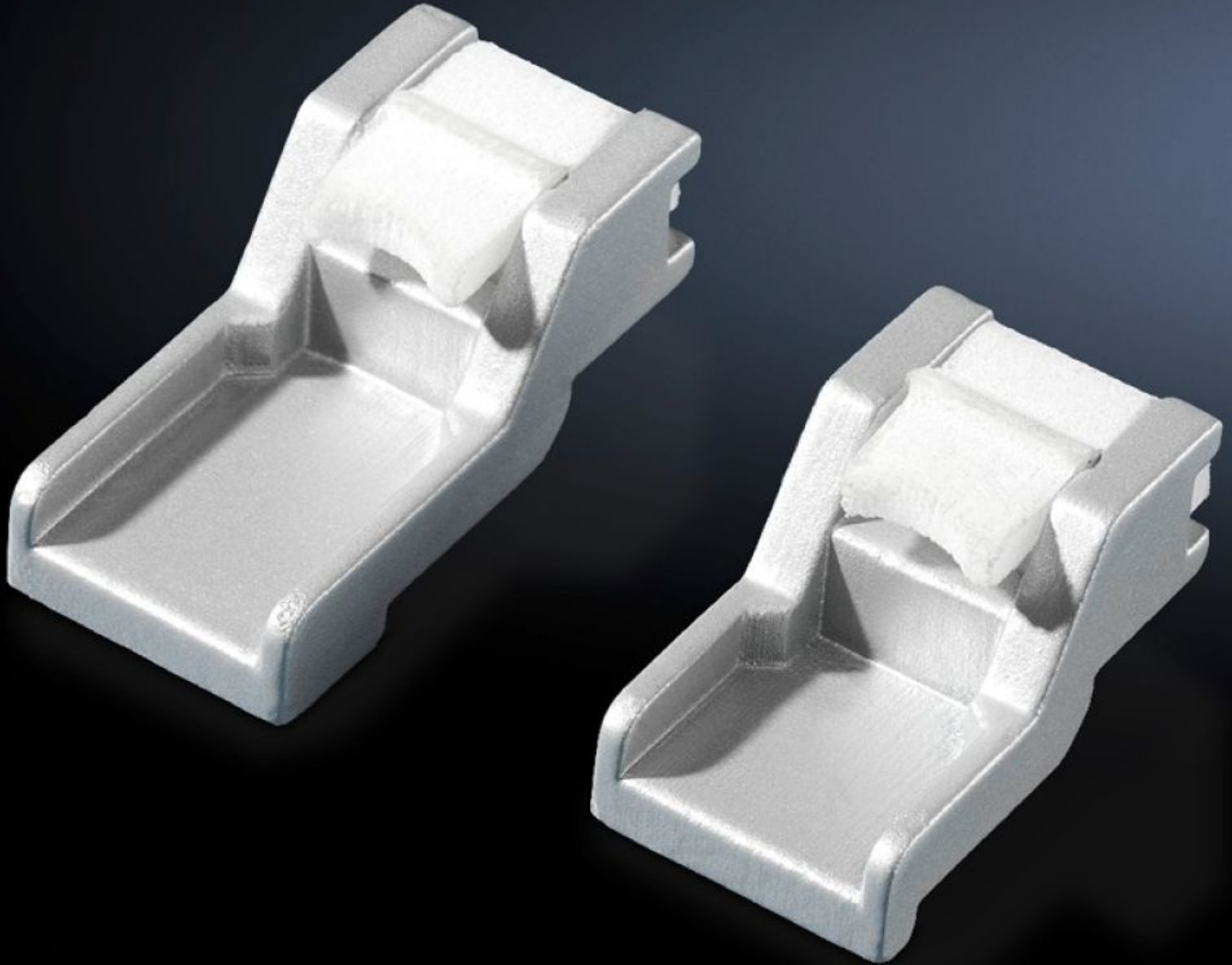


Rittal – The System.

Faster – better – everywhere.



CP 6053.300 Mounting kit

State: 4/22/2026 (Source: rittal.com/us-en)

ENCLOSURES

POWER DISTRIBUTION

CLIMATE CONTROL

IT INFRASTRUCTURE

SOFTWARE & SERVICES

FRIEDHELM LOH GROUP



CP 6053.300 - Mounting kit for Comfort Panel

For the installation of aluminum front panels, command panels and keyboards.

Features

Model No.	CP 6053.300
Version	For screw clamp
Product description	For the installation of aluminum front panels, command panels and keyboards.
Supply includes	8 medium retaining claws, 8 short retaining claws, 4 long retaining claws.
Direct Integration	Siemens Sinumerik: OP 010, OP 010 C, OP 012, TP 012, OP 015, OP 015 A, MCP 483 C, MCP 483, PP 012, PP 012 extension, MCP, KB 483 C, Querty 19" Siemens Simatic: TP 900 Comfort, KP 900 Comfort, TP 1200 Comfort, KTP 1000 Basic, KTP 1500 Basic Panel PC 477C, 577C, 677C: 12.1" keys, 12.1" Touch, 15.1" keys, 15.1" Touch, 19" Touch, 22" Touch (2 packs are required) MP 377 12" Touch, MP 377 15" Touch, MP 377 19" Touch Industrial Flat Panel: IFP 1200 Touch, IFP 1500 Touch, IFP 1200 Key, IFP 1500 Key, IFP 1900 Touch, IFP 2200 Touch Industrial Thin Client: ITC 1200, ITC 1500, ITC 1900, ITC 2200 B & R: Automation Panel, Panel PC
Packaging unit	1 pc(s).
Net weight	0.28 kg
Gross weight	0.285 kg
Customs tariff number	79070000
ETIM 9	EC002625
ECLASS 8.0	27189234
Product description	CP Mounting kit, for Comfort-Panel, for screw clamp