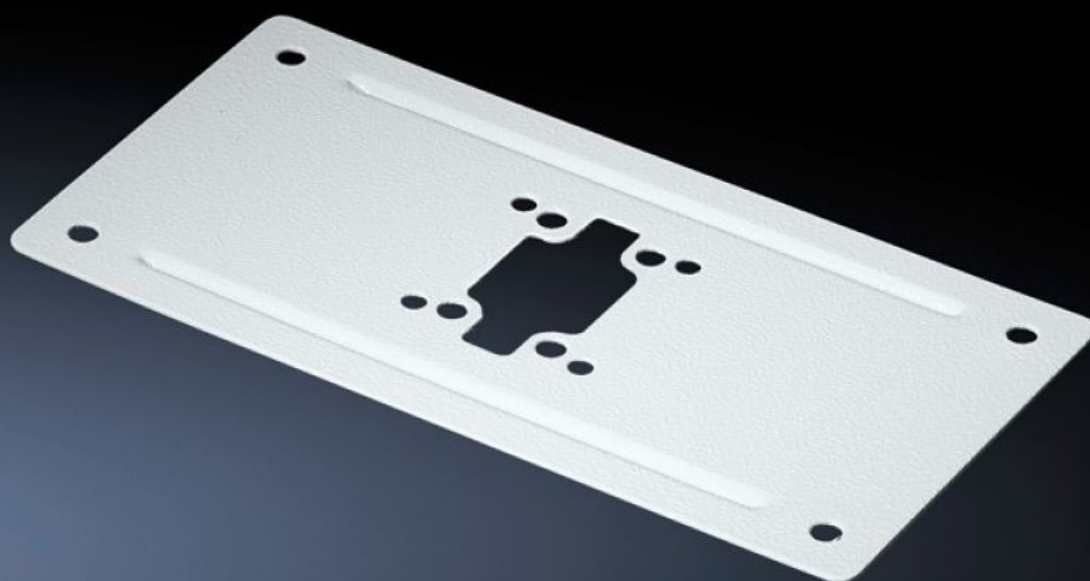


Rittal – The System.

Faster – better – everywhere.



CP 6106.110

Enclosure reinforcement

State: 7/14/2025 (Source: [rittal.com/us-en](https://www.rittal.com/us-en))

ENCLOSURES

POWER DISTRIBUTION

CLIMATE CONTROL

IT INFRASTRUCTURE

SOFTWARE & SERVICES

FRIEDHELM LOH GROUP



CP 6106.110 - Enclosure reinforcement rigid

For external or internal reinforcement of housings in the relevant size.

Features

Model No.	CP 6106.110
Product description	For external or internal reinforcement of housings in the relevant size. Smaller housings may also be mounted directly without reinforcement.
Material	Carbon steel
Supply includes	Mounting hardware Support section2 gaskets
Support arm connection (type)	CP 60
Installation options	for support arm connection Ø 130 mm
Suitable for	Width: ≥ 300 mm Depth: ≥ 150 mm Width: ≥ 11.8 ~ Depth: ≥ 5.91 ~
Packaging unit	1 pc(s).
Net weight	0.8
Gross weight	0.9
PCF/VE (cradle-to-gate)	3.4 kg CO2 eq (Cat B)
Information regarding the PCF class	Category B: PCF value (cradle-to-gate) calculated approximately on the basis of the product weight and self-declared
Customs tariff number	73269098
EAN	4028177698420
ETIM 9	EC002535
ECLASS 8.0	27182604