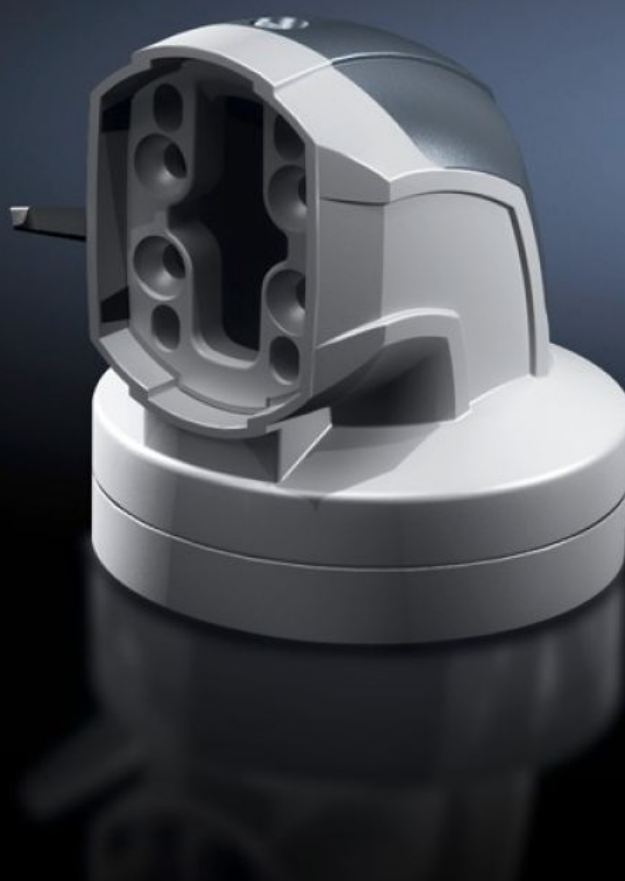


Rittal – The System.

Faster – better – everywhere.



CP 6206.380

Angle coupling 90° CP 60

State: 8/17/2025 (Source: [rittal.com/us-en](https://www.rittal.com/us-en))

ENCLOSURES

POWER DISTRIBUTION

CLIMATE CONTROL

IT INFRASTRUCTURE

SOFTWARE & SERVICES

FRIEDHELM LOH GROUP



CP 6206.380 - Angle coupling 90° CP 60 for support arm connection Ø 130 mm

For swivel mounting of the housing on the horizontal part of the support arm system. Housing may be suspended or top-mounted. Removable cover for easy cable routing.

Features

Model No.	CP 6206.380
Product description	For swivel mounting of the housing on the horizontal part of the support arm system. Housing may be suspended or top-mounted. Removable cover for easy cable routing.
Material	Angle coupling: Cast aluminum/die-cast zinc Cover: Plastic
Color	Angle coupling: RAL 7035 Cover: RAL 7024
Supply includes	Seals Grub (set) screws Adjusting screws Self-tapping screws for support section attachment
Rotating/tilting	Yes
Rotation angle/swivel area	Approximately 310°, lockable via clamping levers The range of rotation can be limited by inserting the grub (set) screws provided
Packaging unit	1 pc(s).
Net weight	1.8
Gross weight	1.953
Customs tariff number	79070000
EAN	4028177684393
ETIM 9	EC000882
ECLASS 8.0	27400556

Approvals

Explanations

Manufacturer's declaration