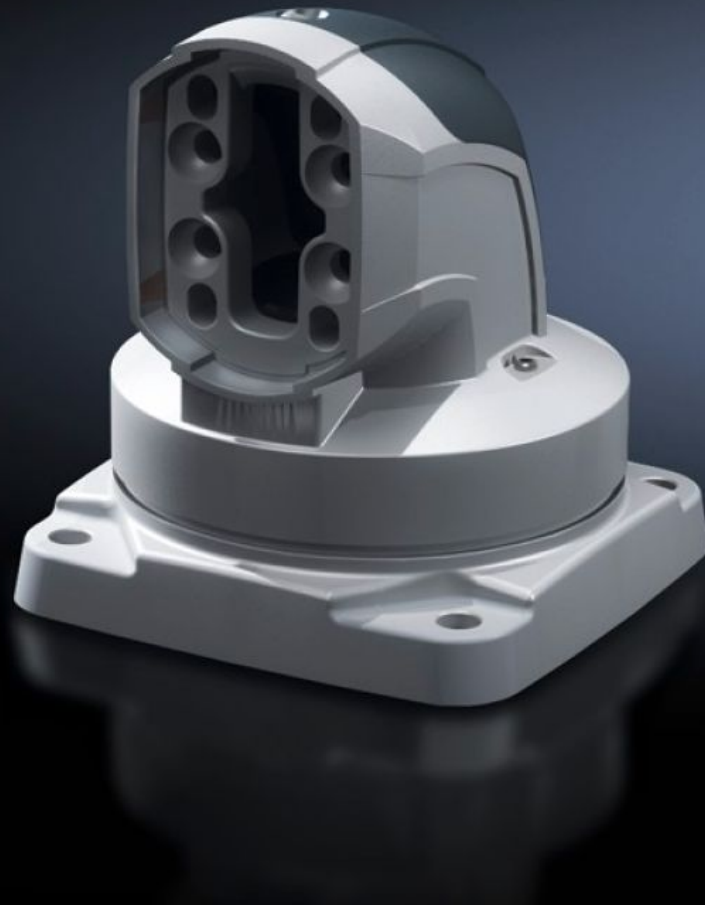


Rittal – The System.

Faster – better – everywhere.



CP 6206.700

Top-mounted joint CP 60

State: 4/22/2026 (Source: rittal.com/us-en)

ENCLOSURES

POWER DISTRIBUTION

CLIMATE CONTROL

IT INFRASTRUCTURE

SOFTWARE & SERVICES

FRIEDHELM LOH GROUP



CP 6206.700 - Top-mounted joint CP 60 Horizontal outlet

For swivel mounting of the support arm system on a horizontal surface – also suitable for ceiling mounting. Removable cover for easy cable routing.

Features

Model No.	CP 6206.700
Product description	For swivel mounting of the support arm system on a horizontal surface – also suitable for ceiling mounting. Removable cover for easy cable routing.
Material	Cover: Plastic Top-mounted joint: Cast aluminum
Color	Cover: RAL 7024 Top-mounted joint: RAL 7035
Supply includes	Seals Screws for restricting rotation range Adjusting screws Self-tapping screws for support section attachment
Rotating/tilting	Yes
Rotation angle/swivel area	Approximately 330° The range of rotation can be limited by inserting the screws/limit plate provided.
Dimensions	Width: 146 mm Height: 158 mm Width: 5.75 " Height: 6.22 "
Packaging unit	1 pc(s).
Net weight	2.86 kg
Gross weight	3.06 kg
Customs tariff number	76169990
ETIM 9	EC000882
ECLASS 8.0	27400556

Features

Product description

CP Top-mounted joint CP 60, outlet horizontal

Approvals

Explanations

Manufacturer's declaration