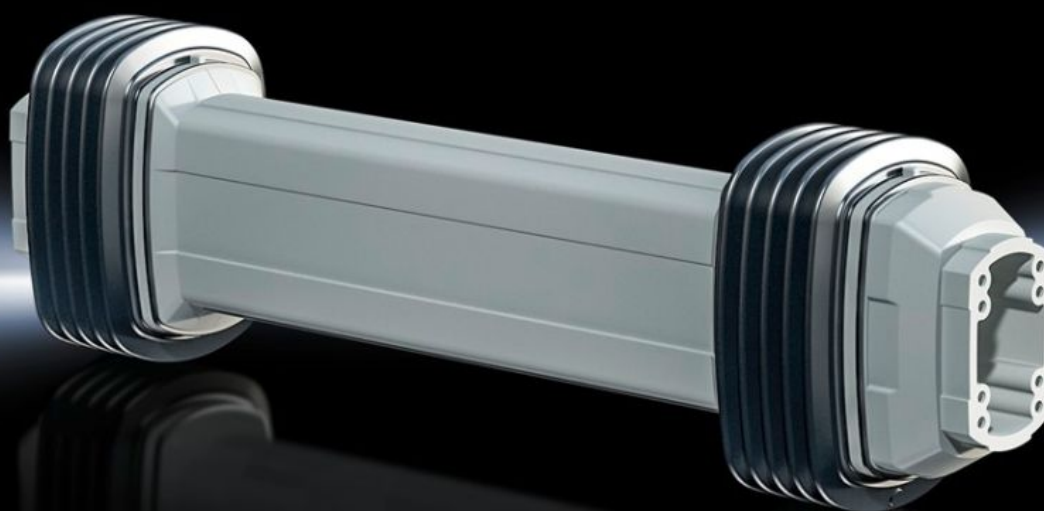


# Rittal – The System.

Faster – better – everywhere.



## CP 6212.120

## Support Profile, Height-Adjustable

State: 2/14/2026 (Source: [rittal.com/us-en](http://rittal.com/us-en))

ENCLOSURES

POWER DISTRIBUTION

CLIMATE CONTROL

IT INFRASTRUCTURE

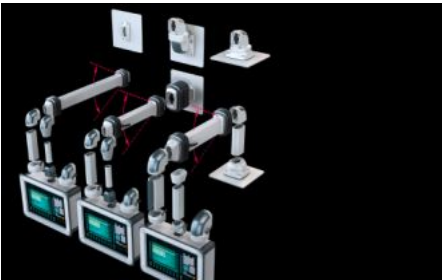
SOFTWARE & SERVICES

FRIEDHELM LOH GROUP



# CP 6212.120 - Support Profile, Height-Adjustable for support arm systems

The new height-adjustable support section always provides the right view of the key parameters in human/machine interaction. The system can be fitted directly to the components of the CP 120 support arm system on the wall side, and to the CP 120 support arm system on the enclosure side without further adaption.



## Features

Model No.	CP 6212.120
Product description	The new height-adjustable support profile, always provides the right view of the key parameters in human/machine interaction. On the wall side, the system can be fitted directly to the components of the CP 120 support arm system without any further adaptation, and on the enclosure side, either to support arm system CP 60 or CP 120, depending on the model.
Benefits	<div>Support arm holds in every position</div> <div>Additional fixing via clamping levers possible</div> <div>Precise adjustment to the trailing load through an adjusting screw on the front of the support profile</div> <div>Adjusting screw can be accessed without dismantling any components</div> <div>Safety through large cable troughs and cable guides at the swing points</div> <div>Removable side panel for easy access to the cable routing</div> <div>Tilting angle of the mounted housing is identical in every height position</div> <div>Cables with connectors such as DVI and VGA are also easily inserted</div> <div>Broad weight range from 4 to 60 kg with three systems. (Weight range applies to configured enclosure and vertical support section)</div>

# Features

Technical specifications	Cable trough: 43 x 21 mm (W x H), max. connector gland: 59 x 17 mm (W x H) Offers enhanced ergonomics through 600 mm (± 300 mm) adjustment range
Applications	For tall and short operators For sitting or standing workstations
Material	Hinge: Cast aluminum Concertina section: Plastic
General color	RAL 7035
Color	RAL 7035
Supply includes	Assembly components
Length	790 mm 31.1 "
Connection options enclosure	CP 120
Connection options wall / machine	CP 120
Note	In combination with support support section, height adjustable observe: When using an intermediate hinge, the height-adjustable support section should always be inserted in the closest horizontal position to the enclosure.
Dimensions	Length: 790 mm Length: 31.1 "
Load	10 kg...60 kg 22 lb....132.3 lb.
Note on Model No.:	Maximum cross-section for cable entry 17 x 59 mm Weight range applies to configured housing and vertical support section.
Packaging unit	1 pc(s).
Net weight	13.76
Gross weight	14.2
Customs tariff number	73269060
EAN	4028177924345

# Features

ETIM 9	EC000882
ECLASS 8.0	27400556