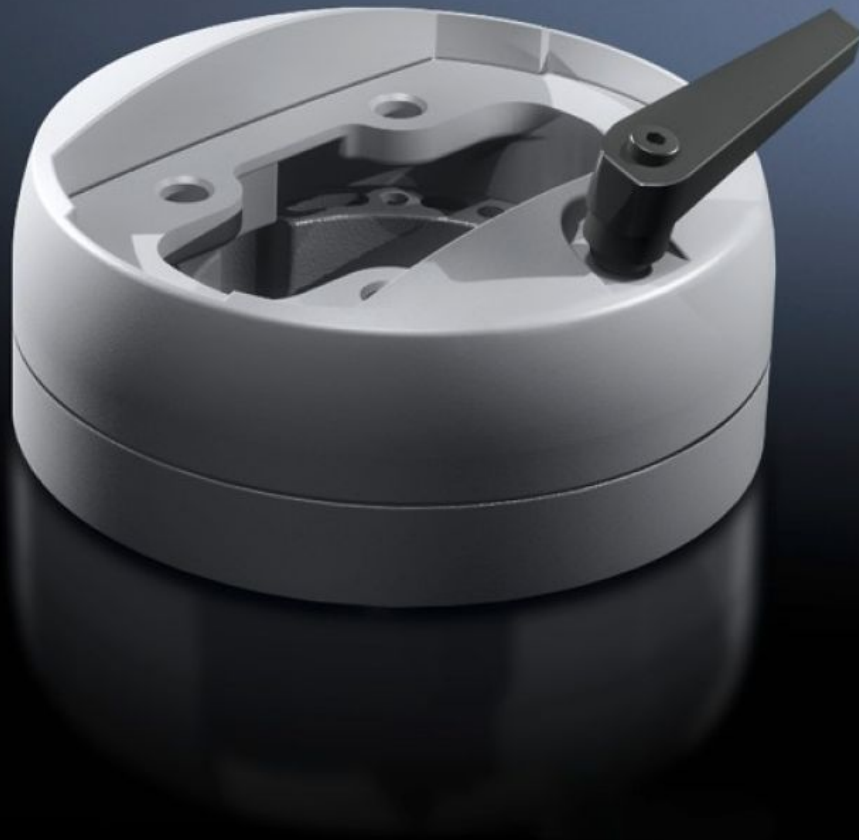


Rittal – The System.

Faster – better – everywhere.



CP 6212.300 Coupling CP 120

State: 5/2/2026 (Source: rittal.com/us-en)

ENCLOSURES

POWER DISTRIBUTION

CLIMATE CONTROL

IT INFRASTRUCTURE

SOFTWARE & SERVICES

FRIEDHELM LOH GROUP



CP 6212.300 - Coupling CP 120 for support arm connection Ø 130 mm

For swivel mounting the housing on the vertical section of the 120 support arm system

Features

| | |
|----------------------------|--|
| Model No. | CP 6212.300 |
| Product description | For swivel mounting the housing on the vertical section of the 120 support arm system |
| Material | Die-cast zinc |
| Color | RAL 7035 |
| Supply includes | Seals Grub (set) screws Self-tapping screws for support section attachment |
| Rotating/tilting | Yes |
| Rotation angle/swivel area | Approximately 310°, lockable via clamping levers The range of rotation can be limited by inserting the grub (set) screws provided |
| Packaging unit | 1 pc(s). |
| Net weight | 1.913 kg |
| Gross weight | 2.08 kg |
| Customs tariff number | 79070000 |
| ETIM 9 | EC000882 |
| ECLASS 8.0 | 27400556 |
| Product description | CP Coupling CP 120, for support arm connection Ø 130 mm |

Approvals

Approvals

Explanations

Manufacturer's declaration