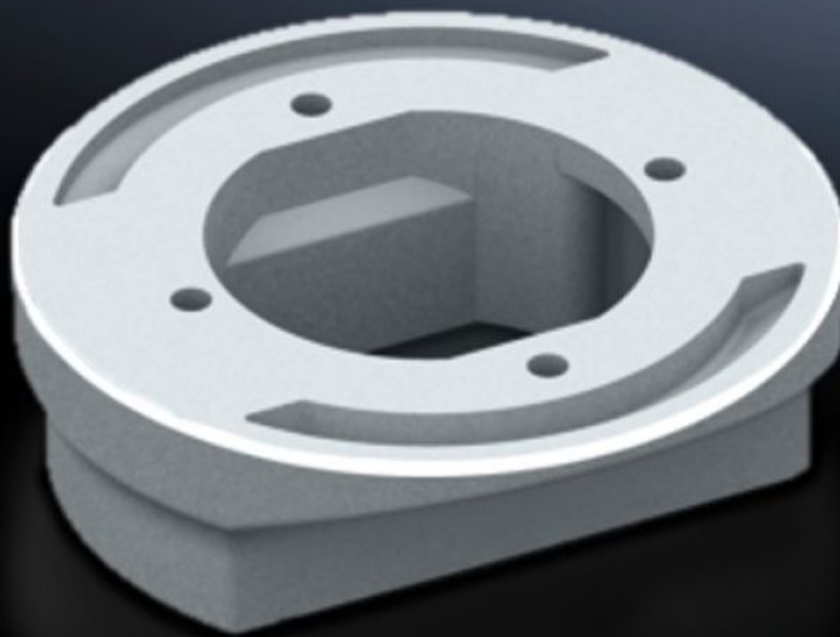
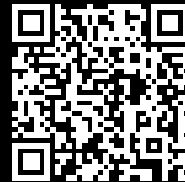


**Rittal – The System.**

Faster – better – everywhere.



# CP 6212.500 Adaptor

State: 2/7/2026 (Source: [rittal.com/us-en](https://www.rittal.com/us-en))

ENCLOSURES

POWER DISTRIBUTION

CLIMATE CONTROL

IT INFRASTRUCTURE

SOFTWARE & SERVICES

FRIEDHELM LOH GROUP



# CP 6212.500 - Adaptor support arm connection Ø 130 mm to 120 x 65 mm

For external mounting of command panels with 120 x 65mm support arm cutout and VESA 75/100 connection console

## Features

Model No.	CP 6212.500
Version	For external mounting of command panel with support arm cut-out 120 x 65 mm and connection console VESA 75/100 to: Coupling CP 120, 6212.300 Attachment CP 120, 6212.320 Angle coupling 90°, CP 120, 6212.380 Pivot with jib (6206.850) Pivot for machine-integrated installation (6206.870)
Material	Cast aluminum
Color	RAL 7035
Supply includes	Seals Fasteners
Rifid y/n	Yes
Dimensions	Height: 40 mm Height: 1.57 "
Packaging unit	1 pc(s).
Net weight	0.5
Gross weight	0.552
Customs tariff number	76169990
EAN	4028177684218
ETIM 9	EC000882
ECLASS 8.0	27400556

# Approvals

Explanations

Manufacturer's declaration