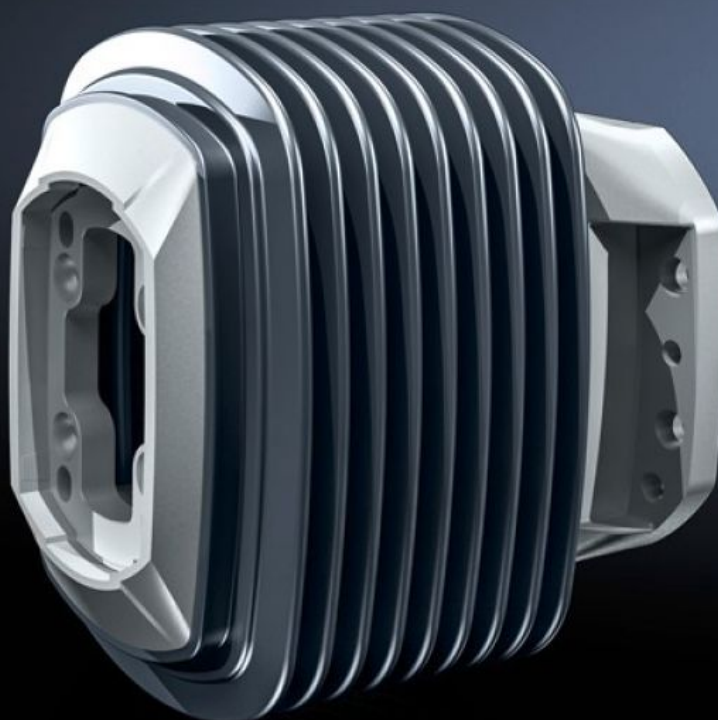


# Rittal – The System.

Faster – better – everywhere.



## CP 6212.780

## Wall-mounted hinge CP 120

State: 7/25/2025 (Source: [rittal.com/us-en](http://rittal.com/us-en))

ENCLOSURES

POWER DISTRIBUTION

CLIMATE CONTROL

IT INFRASTRUCTURE

SOFTWARE & SERVICES

FRIEDHELM LOH GROUP



# CP 6212.780 - Wall-mounted hinge CP 120 Horizontal outlet, without height offset

For swivel mounting of the support arm on a vertical surface.

## Features

Model No.	CP 6212.780
Product description	For swivel mounting of the support arm on a vertical surface.
Material	Wall-mounted hinge: Cast steel Concertina section: Plastic
Color	Wall-mounted hinge: RAL 7035 Concertina section: RAL 7024
Supply includes	Concertina section Screws for restricting rotation range Adjusting screws Self-tapping screws for support section attachment Seals
Rotating/tilting	Yes
Rotation angle/swivel area	Approximately 180° Adjustable to a limited extent by means of 2 slotted steel discs
Packaging unit	1 pc(s).
Net weight	8
Gross weight	8.32
PCF/VE (cradle-to-gate)	31.6 kg CO2 eq (Cat B)
Information regarding the PCF class	Category B: PCF value (cradle-to-gate) calculated approximately on the basis of the product weight and self-declared
Customs tariff number	73269098
EAN	4028177705616
ETIM 9	EC000882
ECLASS 8.0	27400556

# Approvals

---

Explanations

Manufacturer's declaration