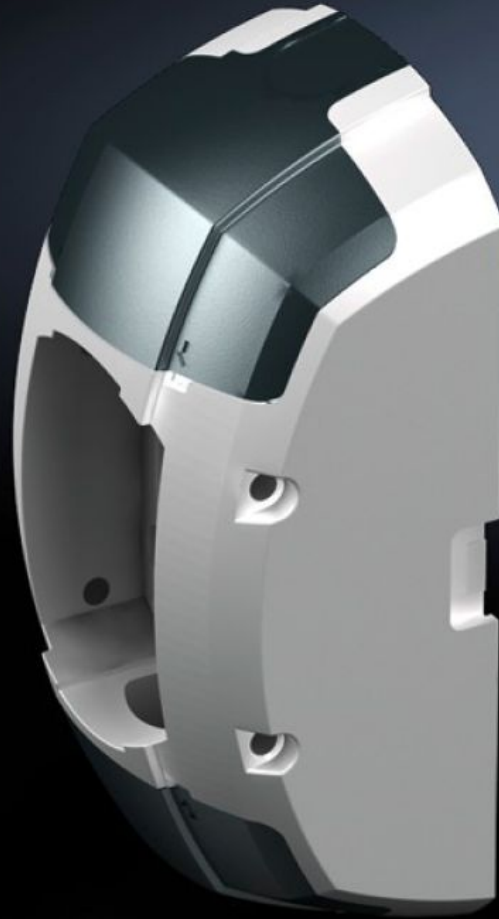


**Rittal – The System.**

Faster – better – everywhere.



**CP 6212.800**

**Wall/base mounting bracket CP  
120, large**

State: 4/10/2026 (Source: [rittal.com/us-en](http://rittal.com/us-en))

ENCLOSURES

POWER DISTRIBUTION

CLIMATE CONTROL

IT INFRASTRUCTURE

SOFTWARE & SERVICES

FRIEDHELM LOH GROUP



# CP 6212.800 - Wall/base mounting bracket CP 120, large

For stable attachment of the support arm system to a vertical or horizontal surface.

## Features

Model No.	CP 6212.800
Product description	For stable attachment of the support arm system to a vertical or horizontal surface.
Benefits	Prepared for flexible cable entry and routing from all sides Integral one-man assembly via machined keyhole Optional anti-twist attachment on the mounting surface by pinning Integral adjustment facility
Material	Wall/base mount: Cast aluminum Cover: Plastic
Color	Wall/base mount, RAL 7035 Cover: RAL 7024
Supply includes	Seals Grub (set) screws Adjusting screws Self-tapping screws for support section attachment
Rifid y/n	Yes
Packaging unit	1 pc(s).
Net weight	2.652 kg
Gross weight	2.852 kg
Customs tariff number	83024900
ETIM 9	EC000882
ECLASS 8.0	27400556
Product description	CP Wall/base mounting bracket CP 120, large

# Approvals

---

Explanations

Manufacturer's declaration